

# GILLINGHAM

★ ★ ★ FOOTBALL CLUB ★ ★ ★

SEASON 2013/14 – OFFICIAL PROGRAMME £3



MAIN CLUB SPONSOR

v SWINDON TOWN

SATURDAY 18 JANUARY 2014

SKY BET LEAGUE ONE, KICK-OFF: 3.00PM



MATCH DAY SPONSOR



# Power

for when you need it most

When a loss of power places you in a spot of trouble and the pressure is on, you can rely on MEMS to supply the energy you need.

Specialists in power generation, we know how damaging an outage can be; that's why 24 hours a day, 365 days a year, we guarantee an unrivalled response to emergency requests for immediate power.

With delivery times averaging 2 hours from 1st call\* MEMS provide an unrivalled service in power rental within the UK.

**MEMS: power to you.**

PROUD SPONSORS OF GILLINGHAM FC

08452 230 400 | [www.mems.com](http://www.mems.com)



\*Data provided by independently audited source.



Chairman:	Paul Scally
Vice Chairman:	Michael Anderson
Non Executive Director:	Mike Quarrington
Associate Directors:	Yvonne Paulley John Anderson
Director of Sales & Marketing:	Paulo Kingston-Corriea
Club Secretary:	Gwen Poynter
Manager:	Peter Taylor
Assistant Manager:	John Schofield
Goalkeeper Coach:	Carl Muggleton
Fitness Coach:	James Russell
Head of Youth:	Darren Hare
Development Coach:	Mark Patterson
First Team Physio:	Gary Hemens
Kit Manager:	Malcolm Stedman
Stadium Manager:	John Carter
Head Groundsman:	Tony Provan
Safety Officer:	Tony Payne
Media Manager:	Martin Weller
Media Assistant:	Phill Catterick
Ticket Office Manager:	Dean Heighes
Retail Manager:	Joanne Barnes
Merchandising:	Val Rault
PA Announcer:	Doug Hudson
Club Photographer:	Barry Goodwin

#### MATCHDAY PROGRAMME

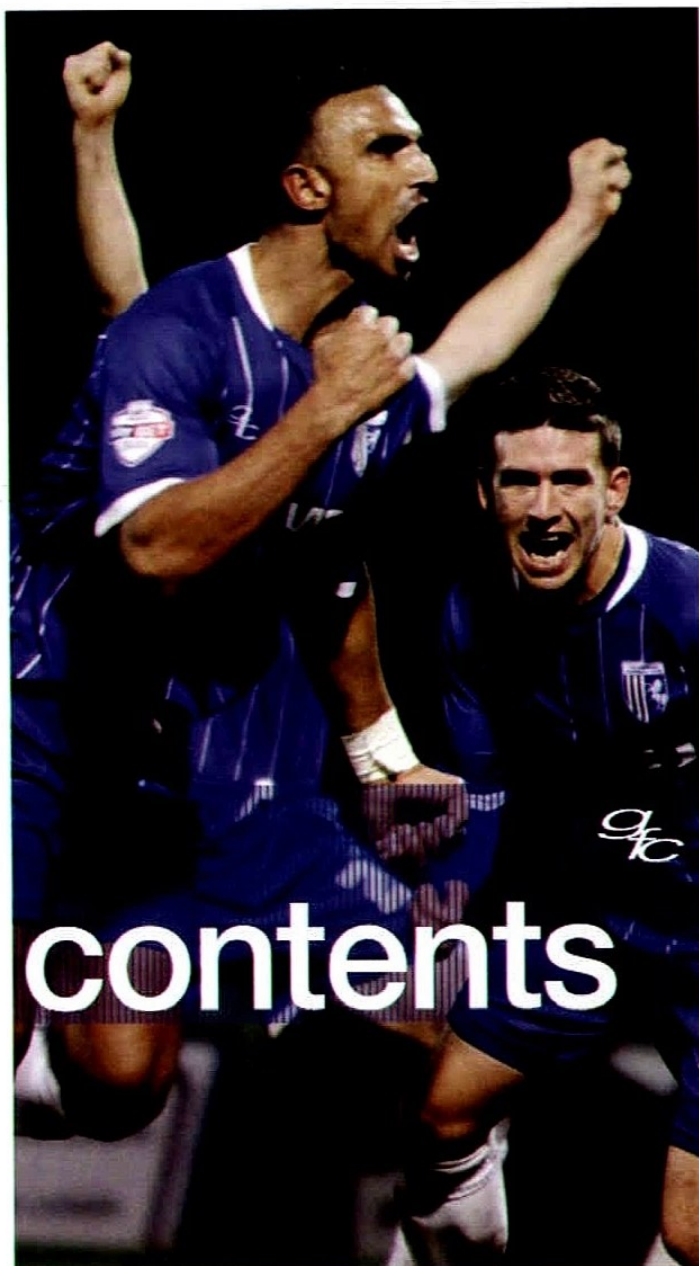
Editor: Martin Weller  
 Designer: Paul Turvey  
 Regular Contributors:  
 Eddie Allcorn, Andy Bradley, Phill Catterick,  
 Nigel Clark, Andrew Ford and Chris Lynham  
 Images: Barry Goodwin

#### CLUB HONOURS

League Two champions 2013  
 League Two Play-off winners 2009  
 Division Two Play-off winners 2000  
 Division Two Play-off finalists 1999  
 Division Three runners-up 1996  
 Division Three Play-off finalists 1987  
 Division Four champions 1964  
 Division Four runners-up 1974  
 Southern League champions 1947 & 1949  
 Southern League runners-up 1948  
 Southern League Cup winners 1947  
 Southern League Division Two champions 1895  
 Kent League champions 1945 & 1946  
 Kent Senior Cup winners 1946 & 1948

**GILLINGHAM FOOTBALL CLUB Ltd**  
 MEMS Priestfield Stadium, Redfern Avenue,  
 Gillingham, Kent ME7 4DD

Tel: 01634 300000 Fax: 01634 850986



- 11 : Enjoy the best of the action from the Gills 1-0 home triumph over Wolves
- 14 : We profile today's Priestfield Great, legendary left-back Dennis Hunt
- 18 : Make your vote count in our search for the Gills Greatest XI
- 20 : Get the lowdown on the Robins with our eight page guide to Swindon Town
- 32 : Phill Catterick talks exclusively to home-grown talent Bradley Dack

Our last home match at Priestfield was a very special occasion indeed with Cody McDonald earning us a famous win . . .



# PAUL D.P. SCALLY

## THE CHAIRMAN



Good afternoon Ladies and Gentlemen, boys and girls and a very warm welcome back to MEMS Priestfield Stadium for our Sky Bet League 1 match with Swindon Town.

As always I would like to start my notes with a warm welcome to the Directors, coaching staff and players of Swindon, and of course to all the travelling supporters that have made the trip east from Wiltshire this afternoon. I trust that you will enjoy your day at Priestfield, though hopefully not too much, and I wish you all a safe journey home and the best of luck for the remainder of the season.

Our last home match at Priestfield was a very special occasion indeed with Cody McDonald earning us a famous win, courtesy of an extra-time goal at the Rainham End. Your support throughout the evening was nothing short of outstanding and I felt our players gave every last ounce of energy for the cause and were thoroughly deserving of the points on the night. For us supporters it is always hugely pleasing to put one over the big boys and to do so in front of the Sky cameras and an audience of millions is all the more satisfying. So congratulations to Peter and the team, and to all our supporters for playing their part in what has to be one of the most enjoyable evenings of the season so far.

On the playing front, the January transfer window gives teams an excellent opportunity

for managers to fine tune their squads for the business end of the campaign and we have already seen a significant amount of movement, both in and out of Priestfield, since the turn of the year. I would like to give my thanks to Danny Hollands and Donervon Daniels for all their efforts, whilst on loan with the club, and also wish good luck to Antonio German, who is currently on loan with League Two side Northampton Town.

### Promise

Meanwhile it's a warm welcome back to Elliott Hewitt, who showed so much promise in his earlier spell on loan from Ipswich Town, and welcome also to young striker Jack Marriott and attacking midfielder Connor Smith. Both lads are young and desperate to play first team football and I look forward to seeing them in action in the coming weeks. Finally I was delighted that Craig Fagan has agreed to extend his stay at the club for the remainder of the season. The Gills have developed a happy knack for taking points from every game in which Craig made the starting line-up and long may that continue, his experience can be a priceless asset to the team in the weeks ahead.

Away from the field of play I would like to remind all supporters that our next home fixture against Port Vale on Saturday 1 February has been designated as a Kids For A Quid

fixture. Consequently all Under-12's tickets are just £1 with Under-18's able to attend the game for only a fiver, so bring along the kids, grandkids, nephews and nieces and lets give the next generation of Gills supporters a footballing treat.

On the subject of youngsters, if you are at a loose end for things to do with the kids in the half term holidays don't forget that the GFC Community team will be running Soccer Schools at various venues throughout the week. The GFC Gems will also be hosting their ever popular Dance workshops so sign up your kids today and join in the fun. For more information and to book your places visit our official website [www.gillinghamfootballclub.com](http://www.gillinghamfootballclub.com)

When today's teams met at the County Ground back in August they produced a highly entertaining game with Gillingham coming back from behind twice to secure a late point, thanks to Cody McDonald. We know that we are in for a tough afternoon again today but if we all stay united as a team and get behind the boys then we will get the result that we are all hoping for. Enjoy the match

Up The Gills  
Paul D.P. Scally  
Chairman



## KIDS FOR A QUID FOR PORT VALE

Treat the family to a feast of football this February with Kids for a Quid for Gillingham's match with Port Vale.

Peter Taylor's team take on the Valiants at MEMS Priestfield Stadium on Saturday 1 February and Under-12's can enjoy all the action for only £1, with Under-18's tickets costing just £5! So book your seats today and join us at the Home of Football in Kent, you can order your tickets by calling the ticket office on 01634 300000 (select option 1), or buy online at [www.gillinghamfootballclub.com](http://www.gillinghamfootballclub.com)

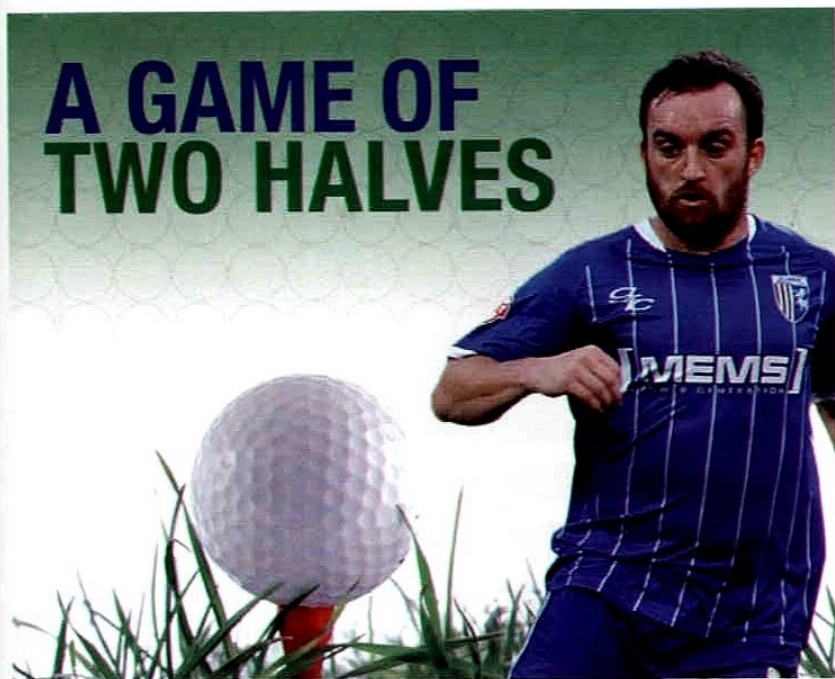
### 50/50 LOTTERY WINNERS

Here are the winners for the Wolves 50/50 Lottery Draw sponsored by DFDS Seaways

1st Prize	376148	£500	Mrs Lowther, Hartlip
2nd Prize	376902	Signed Shirt	Max Terry, Wainscott
3rd Prize	375712	Signed Football	Unclaimed
4th Prize	375764	Goodie Bag	Unclaimed

To claim your prize contact Main Reception between 9am and 5pm on weekdays or phone 01634 300000.





# A GAME OF TWO HALVES

## A GAME OF TWO HALVES



If you're looking for the ultimate way to entertain friends, colleagues or business clients why not join us for our Game of Two Halves Golf Day on Tuesday 11 March.

Start your day from 11.45am with Lunch at Upchurch Golf Club, enjoy 18 holes of Golf on the beautiful course, then head back to MEMS Priestfield Stadium for a Hot Supper before taking your seats for the Gills Sky Bet League one match with Coventry City, kick-off 7.45pm.

A team of four costs just £300 + VAT. There are only a limited number of place available so call 01634 350350 now to book your place.

### THIS WEEK'S SUPERDRAW NUMBERS

£1,000	Ms Helen Nuttall	J0068
£150	Miss P K Atkinson	H8042
£100	Mr D F Sinclair	E1336
£75	Mr D Hollyoak	I7686
£50	Mr D Reynolds	F9844
£50	Mr A Selby	Z1732
£25	Mr R Bate	F9867
£25	Mrs Ryder	B8023
£25	Mrs S Steele	L6275
£25	Mr G Whitefield	AC8749

The birth date drawn this week was 17/02/67 and the £100 jackpot was won by Mike Wood, so next week's prize will start again at £100!

### TODAY'S MASCOTS



The teams will be led out this afternoon by two Gills mascots, Luke Huckle who is from Sittingbourne and Harry Diamond who comes from Rainham. It's a double celebration for Luke who turned 14 on Monday, so many happy returns from

all at GFC. Fellow mascot Harry is 12 years old and is looking forward to meeting his favourite Gills player, Bayo Akinfenwa.

Everyone at Gillingham FC would like to wish both lads a great day out with us at Priestfield and lets hope you can lead the team out to another home win.



### BE A GILLINGHAM MASCOT

Why not make your son, daughter or grandchild the envy of all their friends and let them lead out the Gills in one of our League One fixtures this season.

As well as leading the teams out in front of the Priestfield faithful, a Gillingham mascot will also receive a tour of the stadium, a full playing kit, a souvenir photo of the day, plus four tickets in the Medway stand.

To find out the prices for this chance of a lifetime and sign up your child to be a Gillingham Mascot contact our Sales team on 01634 350350.



# £5 FREE BET EVERY WEEK

for all Sky Bet customers

Just place a £5 accumulator  
at odds of 5/1 or more to qualify each week



Go to [www.skybet.com/gillingham](http://www.skybet.com/gillingham)  
to join the Free Bet Club

Free bet terms and conditions apply. Limited availability. For more info visit [www.skybet.com](http://www.skybet.com) or call 0800 850 133





# PETER TAYLOR

## THE MANAGER



Good afternoon and welcome to all for today's Sky Bet League One match against Swindon Town, especially Robins' manager Mark Cooper and his staff, together with all the travelling supporters.

There have been two games to report on since my last notes, positive and negative, a win and a defeat.

Our game here against Wolverhampton Wanderers felt great, simply because of the team effort and togetherness that was rewarded with a very late winner. I

couldn't praise the boys enough.

By contrast Colchester United away was a forgettable performance, we didn't do enough so consequently they deserved to win. Going over the game, our display was not in keeping with the way that we have performed recently, so I was extremely disappointed.

Throughout the Wolves game your support was so good that we couldn't have been happier to give you that win. So naturally the Colchester defeat and

performance was so frustrating because of the amount of support we took.

We were desperate, as a team, to repeat the performance that we produced for the Wolves game, but it was not to be and I can only apologise for that. Like all performances we will learn and improve.

I'm looking for us to bounce back today, please get behind the team again.

Regards  
Peter





# LEGENDS REUNION NIGHT

THURSDAY 20 FEBRUARY 2014

---

LEGENDS SCHEDULED TO ATTEND:

ANDY THOMSON • PETER TAYLOR • IFFY ONUORA • CHRIS HOPE  
BARRY ASHBY • ADRIAN PENNOCK • NICKY SOUTHALL  
MARK PATTERSON • JUNIOR LEWIS • ANDY HESSENTHALER  
STEVE BUTLER • MARK SAUNDERS • BOB TAYLOR

---

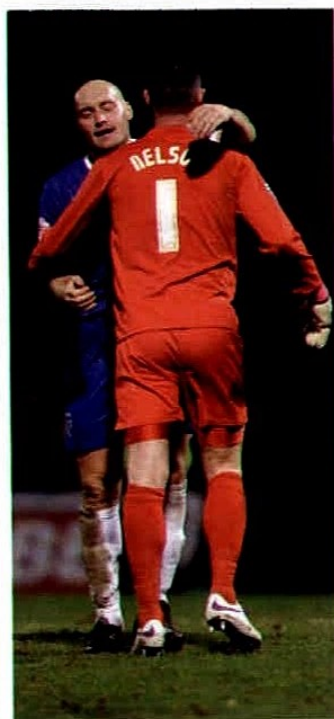


GILLINGHAM  
LEGENDS

FOR MORE INFORMATION ON THIS LEGENDARY EVENING  
CALL: **01634 350350** OR EMAIL: **sales@priestfield.com**

**www.gillinghamfootballclub.com**

# match action



Friday 3 January 2014 / MEMS Priestfield Stadium  
Sky Bet League 1 / Attendance: 7,758



**GILLINGHAM**  
McDonald 90+2

**Gillingham:** Nelson, Martin, Legge, Kedwell, C. McDonald, Gregory, Lee (Dack 51), Harriman, Barrett, Fagan (Akinfenwa 65), Hessenthaler  
**Unused subs:** Linganzi, Davies, Howard, Marriott, Daniels



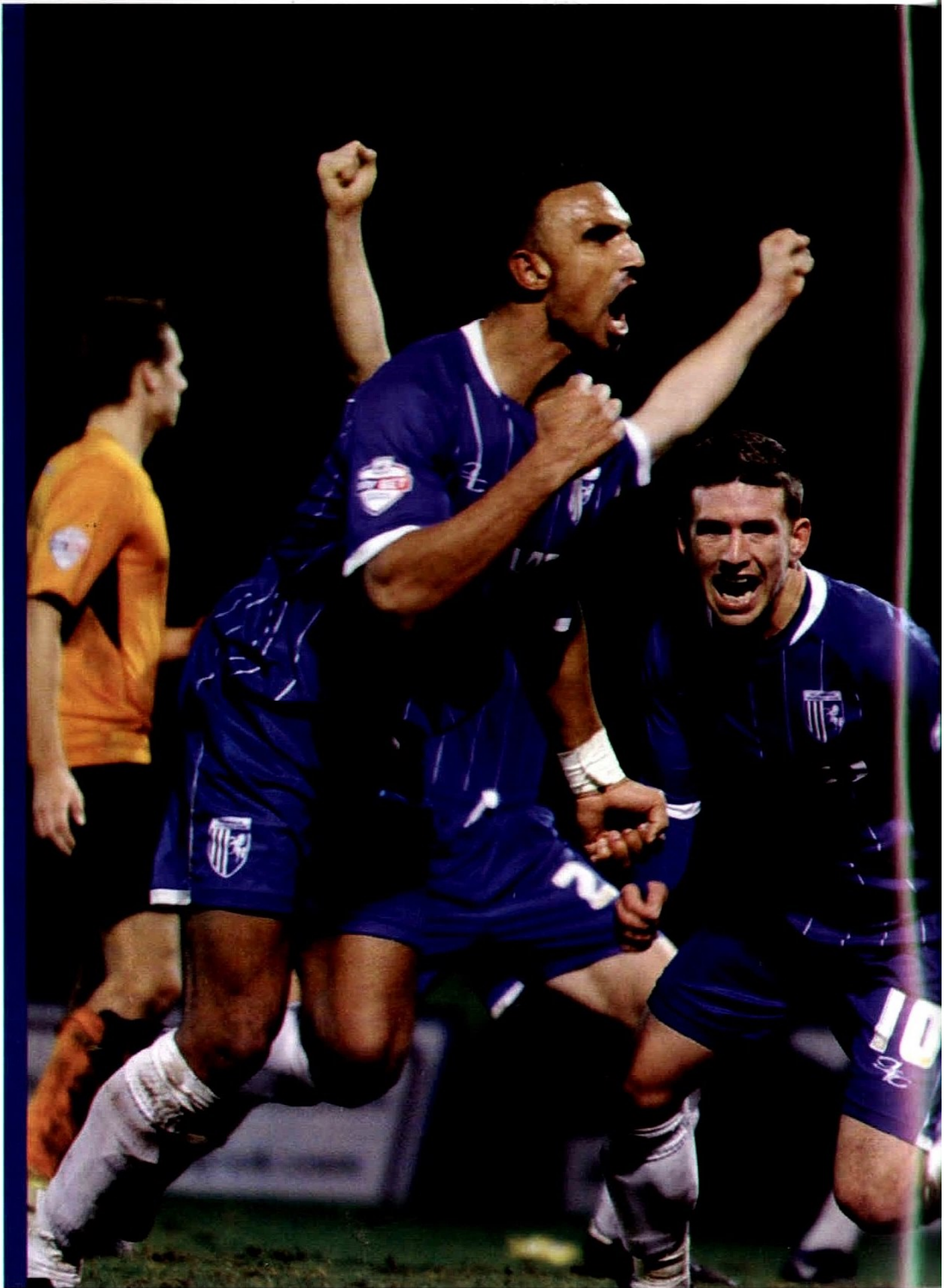
**1 WOLVES**

**0**

**Wolves:** McCarey, Elokobi, Edwards, Bath, Henry (Griffiths 62), Sako, K. McDonald, Ricketts, Golbourne, Jacobs, Doyle (Cassidy 74)  
**Unused subs:** Davis, Evans, Ihiekwe, Foley, Flatt

**Main image:** Danny Kedwell cuts in from the right  
**Left:** Adam Barrett and Stuart Nelson celebrate their clean sheet

*Images: Courtesy of Sports Images*





**Main image:** Cody McDonald's late winner sparks wild celebrations  
**Above:** Bradley Dack gets behind the Wolves defence  
**Below:** Jake Hessenthaler closes down Scott Golbourne

*Images: Courtesy of Sports Images*

Gills	Match Stats	Wolves
1	Goals	0
7	Total Attempts	17
3	On Target	6
4	Off Target	7
0	Blocked	4
1	Hit Woodwork	0
2	Corners	10
2	Caught offside	3
10	Fouls conceded	9
0	Yellow cards	0
0	Red cards	0





## GILLINGHAM LEGENDS

---

# TODAY'S LEGEND DENNIS HUNT

---

To celebrate the opening of Priestfield's new Legends Lounge hospitality experience, this season we're inviting a different fans' favourite back to MEMS Priestfield Stadium each week as our V.I.P. guest for the day.

This afternoon we are delighted to welcome home a player who helped the Gills cement their fledgling Football League status and played a key role in helping Gillingham to the first League championship of our history, Dennis Hunt.

When manager Harry Barratt took over the reins at Priestfield in 1957, he was quick to illustrate his recipe for success, stating, "I want real men in my team, tough, hard, miners who have been on their knees all week hewing coal, men of the soil. Give me a team of eleven six foot Texans and I will win the Championship."

It's popularly believed that Barratt's players were amongst the hardest ever to pull on a Gillingham shirt and when Harry captured the signing of 21 year-old Dennis Hunt from the Army in September 1958, he knew exactly what he was getting.

Physically strong and athletic

with a ferocious tackle, Dennis was equally adept going forward, laying on countless goals during a decade of service with the club. He made his Gillingham debut in a 3-2 Fourth Division win over Oldham Athletic at Priestfield in October 1958 and the uncompromising defender became an instant hit with the Gills faithful, making the left-back role his own, and racking up 27 league and cup appearances in his debut season.

### Mainstay

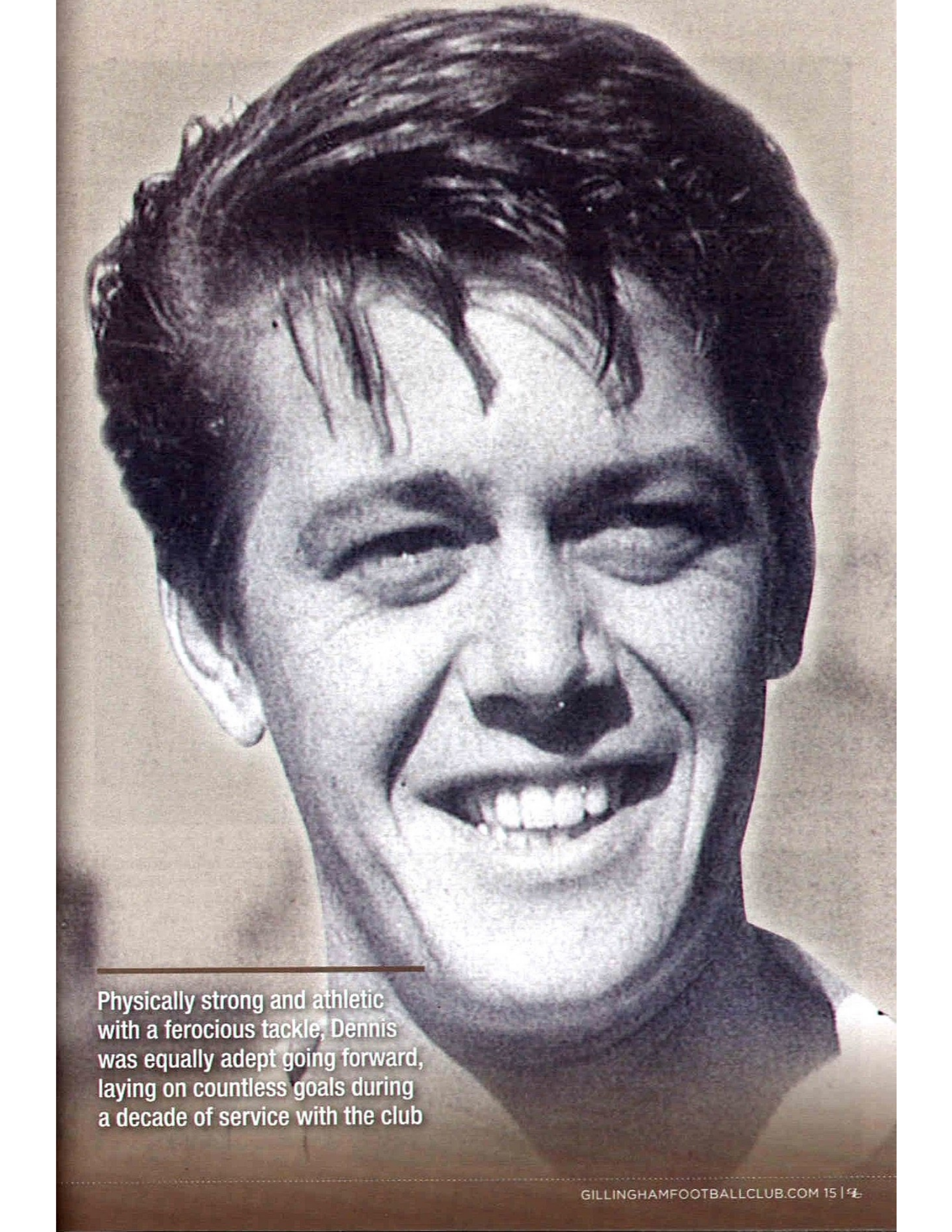
A ruthless defence was the key to Barratt's teams and Dennis was a mainstay throughout his mentor's tenure at the Priestfield helm, making over 40 league starts in each of the following three seasons, before Harry and the Gills parted company in May 1962. New incumbent Freddie Cox opted to make wholesale changes to the side but Hunt remained a first choice on the team sheet as Gillingham finished fifth in Division 4 in Cox's first campaign.

The following season, 1963/64, proved to be a truly memorable year for Gillingham and for

Dennis Hunt too who, netted three goals, including a brace from the penalty spot, in 43 outings, as the club clinched promotion to Division 3 and secured the first championship of our Football League history. The corner stone of that success was one of the meanest defences in the country, with Dennis lining up alongside no nonsense players like Mike Burgess and Geoff Hudson, not forgetting legendary keeper John Simpson, to concede just 30 goals in 46 games.

Hunt continued to terrorise opposition wingers for a full decade at Priestfield, scoring six times in a staggering 355 first team appearances for Gillingham, before controversially being allowed to leave for Brentford in June 1968. Over 50 years after making his debut for the club, Dennis remains the 13th highest appearance maker in Gillingham history and I'm sure you will join us in giving him a hero's welcome back to Priestfield this afternoon.

For more information on our Legends Lounge hospitality packages call the GFC Sales team on 01634 350350.

A black and white close-up portrait of a man with short, dark, wavy hair. He is smiling broadly, showing his teeth. His eyes are slightly squinted, and he has a joyful expression. The background is a plain, light-colored wall.

---

Physically strong and athletic with a ferocious tackle, Dennis was equally adept going forward, laying on countless goals during a decade of service with the club



# GOAL OF THE YEAR 2013

The Football League have launched the search to find the Mitre Goal of the Year for 2013 and we are asking for your help in deciding which of our goals from the last 12 months should be put forward as our nomination.

We can nominate one goal from any Football League competition in the 2013 calendar year, to include goals scored in the Sky Bet Football League, the Capital One Cup and the Johnstone's Paint Trophy.

We want fans to help us decide our club nomination by tweeting your selection from the list below to the club's official twitter account @TheGillsFC, by leaving a comment on our Facebook page, [www.facebook.com/gillinghamfootballclubofficial](http://www.facebook.com/gillinghamfootballclubofficial), or by emailing your selection to [media@priestfield.com](mailto:media@priestfield.com).

The Closing date for nominations is Tuesday January 21 at 5pm.



A



OUR SELECTED NOMINEES FOR THE GOAL OF THE YEAR 2013 ARE AS FOLLOWS:

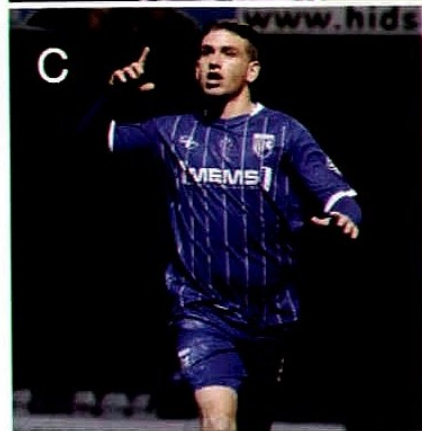
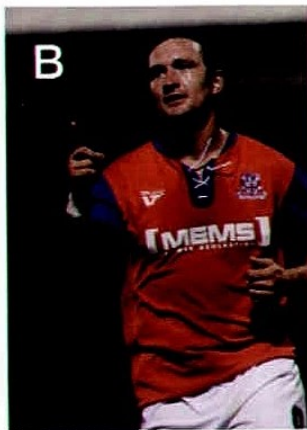
## GOAL A

Matt Fish v Accrington Stanley (MEMS Priestfield Stadium, March 23 2013)

The right-back found the top corner with a terrific left foot strike from just outside the box to beat former Manchester United goalkeeper Paul Rachubka.

His effort powered in to the roof of the net to start the celebrations at the Rainham End; the goal being enough to clinch a 1-0 victory.





**GOAL B**

Danny Kedwell v Fleetwood Town (Highbury Stadium, March 30 2013)

The Gills number nine struck early with a fantastic chip over Scott Davies, following some great work by Adam Birchall to pick out his strike partner.

Kedwell spotted the keeper off his line and delicately chipped it over the Fleetwood number one to put the Gills in front.

**GOAL C**

Cody McDonald v Swindon Town (County Ground, August 24 2013)

The lively striker came off the subs bench to seal a point for the Gills after a long clearance was superbly controlled by the forward.

He cut inside from the left flank and with his right foot beat the helpless Wes Foderingham.

**GOAL D**

Joe Martin v Crewe Alexandra (The Alexandra Stadium, September 28 2013)

In a dominant display for the Gills it was Joe Martin who made the score 2-0 with a magnificently taken free kick.

From 20 yards the left back curled it around the wall and in to the top corner, giving Steve Phillips in the Alex goal no chance.

**GOAL E**

Chris Whelpdale v Notts County (MEMS Priestfield Stadium, October 22 2013)

The midfielder gave Gills the lead over County with a fantastic effort just inside the penalty area.

Myles Weston delivered a great ball to the back post; Whelpdale took a touch to bring it inside and powered the ball home with an accurate right foot shot.

**GOAL F**

Bayo Akinfenwa v Tranmere (Prenton Park, December 20 2013)

The striker scored his first of two on the night with a fantastic right foot effort on the volley across Owain Fon Williams in to the opposite corner.

Bradley Dack took a heavy touch and a 50/50 ball worked its way in to the path of Akinfenwa who converted the opportunity with a top class finish.

**GOAL G**

Cody McDonald v Walsall (MEMS Priestfield Stadium, December 29 2013)

With the scores deadlocked at 0-0 at the break, Cody pulled off a spectacular overhead kick just seconds after the re-start to put Peter Taylor's side in front.

A short pass from Craig Fagan was met with a decent first touch to sit the ball up, and he adjusted his body beautifully to put the effort in to the top corner.

When you nominate be sure to outline clearly your chosen selection, and our goal will then be entered in the Mitre Goal of the Year category at the Football League Awards 2014.

A judging panel will then review the goals with the top 10 being shown on Sky Sports' Soccer AM on 9th February. Fans will be given the opportunity to vote for goals to make the final shortlist of five, with the overall winner being decided at the glittering Awards ceremony at The Brewery, London on Sunday 16th March.



# GILLINGHAM LEGENDS

## CHOOSE YOUR GREATEST ATTACKING MIDFIELDER



THE VOTING IS OPEN FOR FANS TO SELECT THEIR ALL-TIME FAVOURITE GILLS ATTACKING MIDFIELDER.

To mark the opening of Priestfield's Legends Lounge, throughout the 2013/14 campaign, we're asking fans to vote for what they consider to be their greatest all-time Gills XI.

Thanks to all our supporters that voted for their ultimate central midfielders last month, hundreds of you voted, and we'll be announcing the results very soon.

Meanwhile voting is now open for the attacking midfield role which will be the next to be added to our Legends Lounge Wall of Fame. Here's our shortlist for Gillingham's greatest attacking midfielders, or you can email your own suggestions to us by using [media@priestfield.com](mailto:media@priestfield.com)

### TERRY COCHRANE

A wing wizard and consummate entertainer, blessed with bags of

skill, Northern Ireland international winger Terry was signed from Middlesbrough on a free transfer by Keith Peacock in 1983, and crowned his debut with a goal in a 2-0 win over Preston at Priestfield. His three seasons at the club saw the Gills challenging for promotion every year, with one of the most attractive, attacking squads ever assembled at the club and he was a worthy winner of our Player of the Year trophy in 1984/85.

### BRIAN GIBBS

Gillingham born Brian cost manager Freddie Cox £4,000 from Bournemouth when he signed in October 1962 but the inside-left went on to repay Cox's trust many times over. He finished as top scorer in the Gills 1963/64 Fourth Division title winning team and led the club's scoring stakes for five straight seasons, becoming in the process the first player in Gillingham history to score 100 goals in the Football League.

### HOWARD PRITCHARD

Wales international winger Howard was another highly skilful and crowd pleasing winger signed by Keith Peacock from Bristol City for £22,500 in July 1986. He was a virtual ever-present in his debut season, scoring 12 goals, whilst providing countless more for Tony Cascarino and Dave Shearer as the Gills powered their way into the play-offs, Pritchard famously scoring at Roker Park to relegate Sunderland in the second-leg of our semi-final tie.

### ALAN WILKS

A quiet and unassuming character off the field, Alan was a cultured and technically gifted performer who became an instant favourite with Gills supporters after signing from Reading for £5,000 in August 1971. Voted Player of the Year in his debut campaign, he was a key player in the Gills promotion winning team of 1973/74, netting 14 goals in 43 appearances as Andy



Nelson's side returned to Division 3 as runners up to Peterborough United.

**GORDON PULLEY**

Signed from Millwall in the summer of 1958, 5 foot 5 inch left-winger Gordon more than made up for his diminutive stature with a thunderbolt shot that frequently bested opposition keepers. A permanent fixture down the Gills' left for six seasons, Pulley netted 51 goals in 222 outings, as well as laying on countless chances for his team mates, helping steer the club to the Fourth Division title in 1963/64.

**NICKY SOUTHALL**

First signed by Tony Pulis in 1997 as part of the club's squad rebuilding for an assault on the Second Division, Nicky went on to make over 370 first team appearances in four separate playing spells at Priestfield. Operating predominantly on the right of midfield, Trigger was

a set-piece specialist and scored some stunning goals for the Gills. A member of both our Wembley play-off final teams, "Trigger" sits at 10th in the club's all-time appearances table.

**PAUL SHAW**

An exciting and highly creative attacking midfielder, Paul joined the Gills from Millwall in 2000 as Andy Hessenthaler assembled a squad for our first season at Championship level. Able to play on either flank, behind the front two or as a striker, Paul netted 12 goals in 49 league and cup appearances as Gillingham clinched their highest ever Football League finish, claiming 11th place in the Championship in 2002/03.

**MATT JARVIS**

Handed his debut by Andy Hessenthaler, while still an apprentice at the age of 17, in November 2003, Matt's tricky wing play and turn of pace quickly had

Gills fans leaping out of their seats, week in, week out. His outstanding personal performances during the 2006/07 campaign earned Jarvis a place in the PFA League One Team of the Year with Paul Scally claiming he would go on to play for England, a feat he duly achieved against Ghana at Wembley in 2011.

**THERE ARE THREE WAYS FOR SUPPORTERS TO VOTE:**

- Via Twitter @TheGillsFC using the hashtag #GreatestAttackingMid
- Via Facebook on GillinghamFootballClubOfficial comment using GreatestAttackingMid
- Via email to media@priestfield.com subject title GreatestAttackingMid

**GREATEST ATTACKING MIDFIELDER VOTE NOW**

# welcome to SWINDON TOWN



## MID-TERM REPORT

Handed the managerial reins in August, Mark Cooper has done a sterling job of helping the Robins shake off the disappointment of play-off semi-final defeat last season and has assembled a team to compete for promotion again in 2013/14.

They were slow to get off the mark, starting the season with just three wins in their opening nine League fixtures, but a superb run of home form, which has delivered nine wins, one draw and only two defeats to date, leaves Swindon sitting eighth in Sky Bet League One, seven places and eight points above the Gills, and only two points off a play-off position.

By contrast the Robins have not enjoyed the best of seasons on their travels, recording only two League wins on the road, with a further seven of their 12 away fixtures ending in defeats, an impressive 4-0 win at Rotherham United in October and a 2-1 win at Colchester United in November being their only triumphs to date.

## OUR LAST MEETING

The Gills provided the opposition for Mark Cooper's first game

after officially being handed the County Ground reins in August. Travelling to Wiltshire with just one point from our first three League One matches, visiting supporters may well have feared the worst when Nathan Byrne fired the hosts in front after just 12 minutes but hope was restored just six minutes later as Danny Kedwell rose above the Robins defence to nod Chris Whelpdale's long throw into the far corner.

Midway through the second half Nathan Thompson restored the home side's advantage but the Gills claimed a share of the spoils when substitute Cody McDonald raced onto the end of a Leon Legge clearance and slotted into the keeper's bottom right corner to earn Gillingham's first away point of the campaign. To date we remain the only club to earn a draw in the League at the County Ground this season.

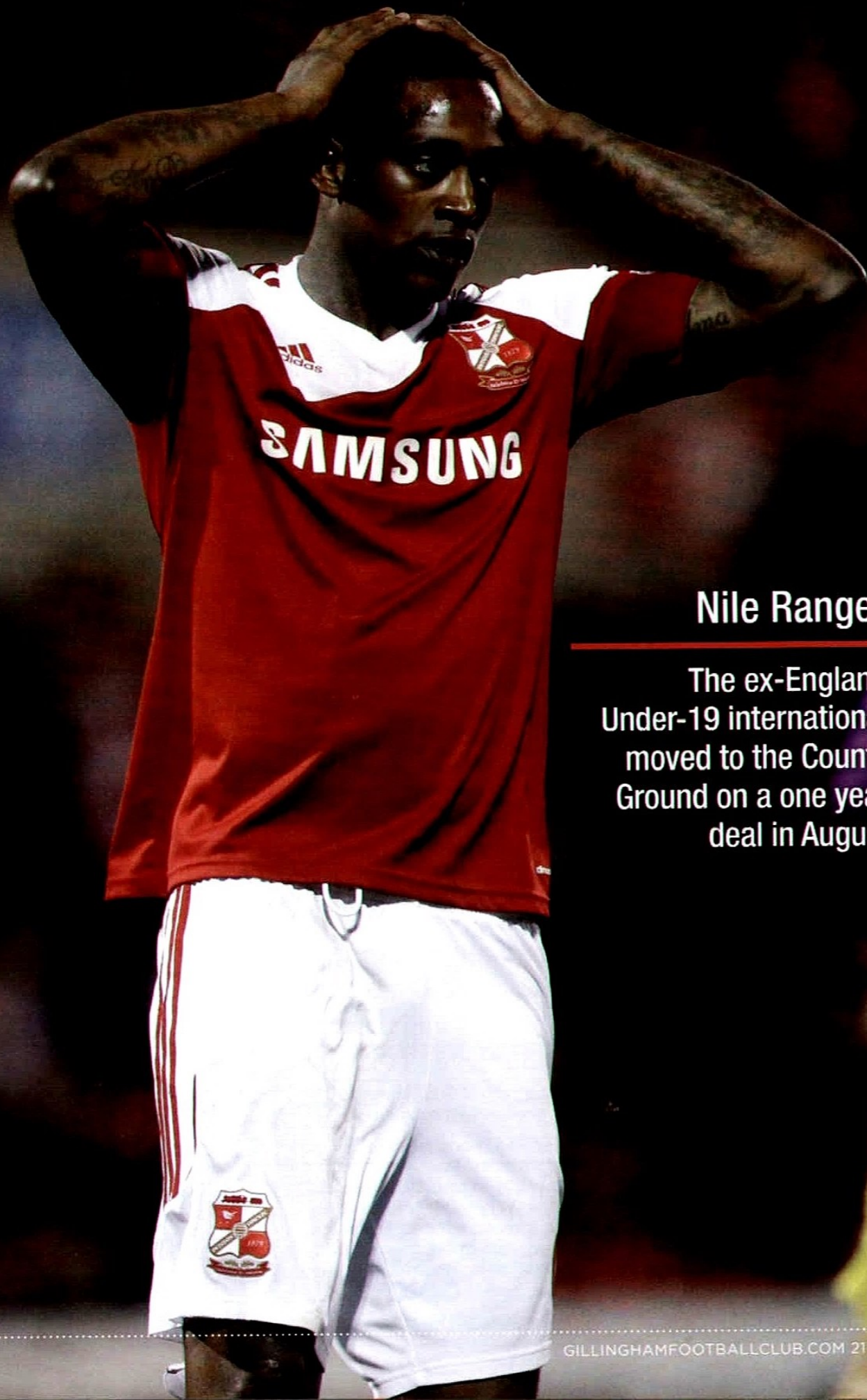
GILLINGHAM: Nelson, Martin, Legge, Whelpdale (Dack 62), Akinfenwa (McDonald 72), Kedwell, Weston (German 75), Gregory, Lee, Harriman, Barrett.

SWINDON TOWN: Foderingham, Thompson, Byrne (Mason 66), Luongo, Hall, Harley, Ranger, Pritchard, McEveley, Kasim, Ward.

## RANGER RETURNS

One surprise name on the Robins' team sheet for last weekend's home win over Peterborough United was that of former Newcastle United front man Nile Ranger. The ex-England Under-19 international moved to the County Ground on a one year deal in August, scoring six goals in his first 15 games, but seemed to be heading out of the club recently after a number of internal disciplinary issues.

However not only was Nile named in the starting line-up for the Posh match but set his team on route to victory with the opening goal in a 2-1 win. Manager Mark Cooper summarised the situation saying, "Nile came to me and wanted to apologise to the players. I think, in football terms, they want him in the team. The rest of the stuff off the pitch, they feel very let down by him and they let him know that, but at the end of the day they decided that we are a better team with him in it."



## Nile Ranger

---

The ex-England Under-19 international moved to the County Ground on a one year deal in August

# 2013-14 STAT PACK



**GILLINGHAM**

**v**

**SWINDON TOWN**



## MATCH FACTS

The Gills scored eight goals over their last two home games in league competition against Swindon Town; averaging four goals per game.



## MATCH FACTS

Swindon Town are without a win in four visits to Priestfield; scoring just twice over the course of those matches.



**GOALS**



**AV. GOALS PER GAME**



**SHOTS (EX. BLOCKED)**



**% SHOTS ON TARGET**



**CLEAN SHEETS**



**% GOALS TO SHOTS**



**CORNER KICKS**



**GOALS CONCEDED**



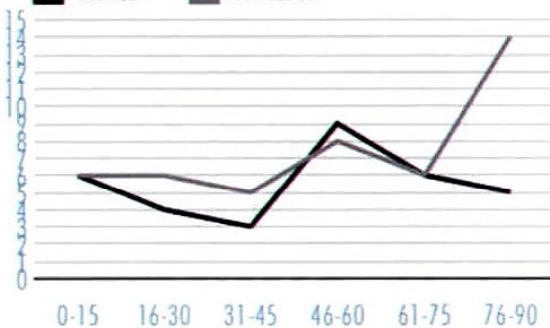
**AV. GOALS CONCEDED PER GAME**



**FOULS**

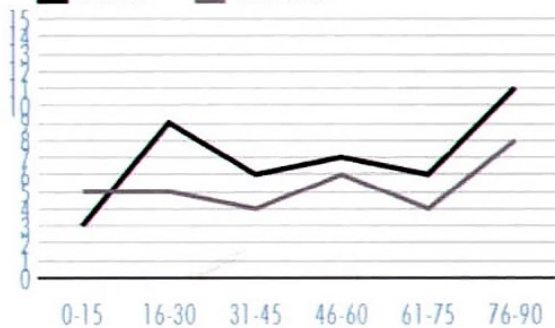
## GOAL TIMES

■ SCORED ■ CONCEDED



## GOAL TIMES

■ SCORED ■ CONCEDED



\*Data does not include games played on January 14th



# meet the team SWINDON TOWN



MARK COOPER  
MANAGER



## THE GAFFER: MARK COOPER

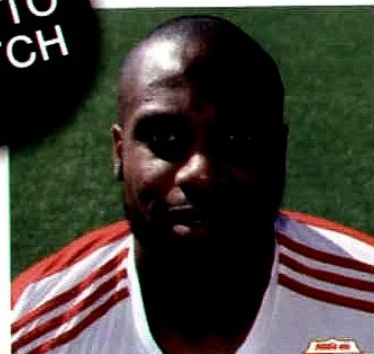
The son of former Leeds and England international full-back Terry Cooper, Mark enjoyed a 20 year professional career as a midfielder, representing the likes of Birmingham City, Fulham, Hartlepool United and Exeter City. Having enjoyed success as a manager with Tamworth and Kettering, he was handed the reins at Peterborough United in 2009 and spent a second spell with Kettering followed by a brief stint at AFC Telford before accepting the Swindon job in August 2013.

## DANGER MAN: DANY N'GUESSAN

PREVIOUS CLUBS: Auxerre, Rangers, Lincoln City, Leicester City, Millwall

Signed on a free transfer from Millwall in September, Dany has enjoyed a sparkling start to life at the County Ground netting eight league goals in 20 appearances prior to the turn of the year. Equally comfortably cutting in from the wing or playing through the centre, he began his career with French side Auxerre's youth academy but made his name with Lincoln City after a successful spell on loan with local non-league side Boston United.

ONE TO  
WATCH



DANY N'GUESSAN  
STRIKER / AGE 26



DARREN WARD  
DEFENDER / AGE 35



## THE SKIPPER: DARREN WARD

PREVIOUS CLUBS: Watford, Millwall, Crystal Palace, Wolverhampton Wanderers

A vastly experienced centre-half, Darren joined the Robins on loan from Millwall last season, making the move permanent in January 2013, and briefly found himself in joint caretaker charge of the team following Paolo Di Canio's departure a month later. He marshalled the defence as Millwall reached the FA Cup final in 2004, losing 3-0 to Manchester United, and cost Crystal Palace a fee of £1.1 million when he left the Den for Selhurst Park in 2005.



**WES FODERINGHAM**  
GOALKEEPER / AGE 22



**PREVIOUS CLUBS:** Fulham, Crystal Palace, Bromley (loan), Borehamwood (loan), Histon (loan)

Named in the PFA League One Team of the Year last season, Wes has been every present between the posts for the Robins this year.



**TYRELL BELFORD**  
GOALKEEPER / AGE 19



**PREVIOUS CLUBS:** Liverpool

A summer signing, Tyrell is a former England Under-17 international who has featured four times in cup competitions for Swindon this season.



**NATHAN THOMPSON**  
DEFENDER / AGE 23



**PREVIOUS CLUBS:** None

A product of the Robins own youth system, Nathan has established himself as first choice right-back and was voted Player of the Year in 2012/13.



**NATHAN BYRNE**  
DEFENDER / AGE 21



**PREVIOUS CLUBS:** Tottenham Hotspur, Brentford (loan), Bournemouth (loan), Crawley (loan)

Full-back Nathan moved to the County Ground from Spurs in April and scored his debut goal against the Gills in our 2-2 draw in August.



**GRANT HALL**  
DEFENDER / AGE 22



**PREVIOUS CLUBS:** Lewes, Brighton & Hove Albion

A highly rated young centre-half, Grant is one of three players currently on a season long loan with Swindon from Premier League Tottenham Hotspur.

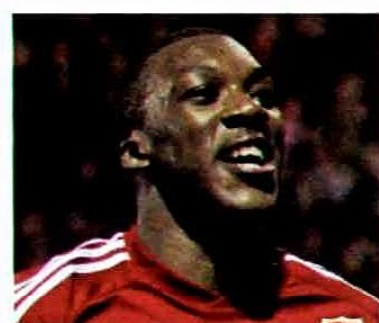


**JAY McEVELEY**  
DEFENDER / AGE 28



**PREVIOUS CLUBS:** Blackburn, Gillingham (loan), Ipswich (loan), Derby County, Barnsley

Scotland international left-back Jay is no stranger to Priestfield, having scored once in 10 games for Stan Ternent's Gillingham side in 2004/05.



**TROY ARCHIBALD-HENVILLE**  
DEFENDER / AGE 25



**PREVIOUS CLUBS:** Tottenham, Norwich City (loan), Exeter City, Carlisle (loan)

Closing in on a return from injury, Troy is a powerful defender who can also provide cover for the midfield when required.

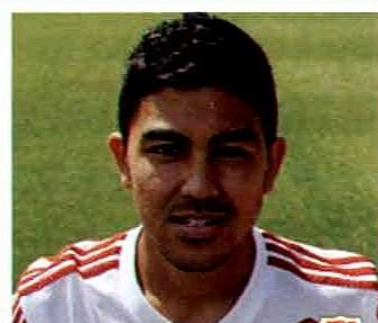


**RAPHAEL ROSSI BRANCO**  
DEFENDER / AGE 23



**PREVIOUS CLUBS:** None

A graduate of Brighton & Hove Albion's academy, Brazilian born defender Raphael joined the Robins in the summer following a successful trial.



**MASSIMO LUONGO**  
MIDFIELDER / AGE 21



**PREVIOUS CLUBS:** Tottenham Hotspur, Ipswich Town (loan)

Born in Sydney, Australia, Massimo is a creative midfielder who signed from Tottenham on a three year deal in August for a fee of £400,000.





**RYAN HARLEY**  
MIDFIELDER / AGE 28



**PREVIOUS CLUBS:** Bristol City, Exeter City, Swansea City, Brighton & Hove Albion

A key player in Exeter's rise from the Conference to League One, Ryan joined the Robins from Brighton on a free transfer in July.



**RYAN MASON**  
MIDFIELDER / AGE 22



**PREVIOUS CLUBS:** Tottenham Hotspur, Yeovil (loan), Doncaster (loan), Millwall (loan)

A loan capture from Spurs, attacking midfielder Ryan has been in fine form this season, scoring five goals in his first 14 league outings.



**ALEX PRITCHARD**  
MIDFIELDER / AGE 20



**PREVIOUS CLUBS:** Tottenham Hotspur, Peterborough United (loan)

The last of the Tottenham loan trio, Alex is another attacking midfielder who featured in Peter Taylor's England squad for the Under-20 World Cup this summer.



**YASER KASIM**  
MIDFIELDER / AGE 22



**PREVIOUS CLUBS:** Brighton, Luton (loan), Macclesfield Town (loan)

Born in Baghdad, Iraq, Yaser was on the books of Spurs as a youngster before turning professional at Brighton and has attracted interest from larger clubs since joining the Robins this summer.



**LOUIS THOMPSON**  
MIDFIELDER / AGE 19



**PREVIOUS CLUBS:** None

The younger brother of full-back Nathan, Louis has also worked his way through the youth ranks at the County Ground and has been capped by Wales at Under-19 level.



**BEN GLADWIN**  
MIDFIELDER / AGE 21



**PREVIOUS CLUBS:** Wallingford Town, Hayes & Yeading, Burnham, Marlow

Signed from Southern League side Marlow in November, Ben is an energetic midfielder with an eye for goal.



**JACK BARTHAM**  
MIDFIELDER / AGE 20



**PREVIOUS CLUBS:** Tottenham Hotspur

A versatile performer, Jack can operate in defence or midfield and was signed from Spurs at the start of the 2013/14 campaign.



**MILES STOREY**  
STRIKER / AGE 20



**PREVIOUS CLUBS:** Salisbury City (loan)

Handed a scholarship in 2010, following his release by Coventry City, Miles got revenge on the Sky Blues last month, netting an 86th minute winner in a 2-1 win over his former club.



**GEORGE BARKER**  
STRIKER / AGE 22



**PREVIOUS CLUBS:** Brighton, Lewes (loan), Barnet (loan), Newport (loan)

Signed last week on an 18 month contract from Brighton, George started the 2013/14 season with a loan spell at Newport County.



# SWINDON TOWN



Formed in 1879 Swindon's formative years were nomadic, playing at a number of venues in and around the town, the most notable of which was next to a quarry. The decision to end their stay there was prompted by a child falling into the quarry during a match.

Swindon moved to the County Ground in 1895, two years after the 21 acre site had opened. The only facility then was an impressive cricket pavilion, which remains to this day and which was granted listed building status in 1986. A year later, thanks to funds donated by local brewer Thomas Arkell, the club was able to build its own stand on land away from the cricket outfield and that is where the Robins have remained ever since.

The first season at the County Ground saw average crowds of 3,000 but over 6,000 turned up for a Southern League match with Reading in October 1896. The ground was slowly developed and

by the time Swindon joined the Football League in 1920 it could boast terraces and a full length main stand

A cover was placed over the Shrivenham Road side in 1932, while the covered Town End terrace was opened in 1938. Funded by the Supporters Club it cost £4,300 and was opened by local MP Sir Wavell Wakefield, a former rugby union player who had captained England to back to back Grand Slams in the 1920s. The other end of the ground was open terracing.

On 23 August 1940 a dozen German bombs landed on the County Ground cricket pitch and along Shrivenham Road. The football ground survived the attack and later on in the war huts were placed on the pitch when it was used as a prisoner-of-war camp. The club later received compensation for this.

That wasn't the end of the club's military links as in 1958 they bought one of the stands from

the Military Ground in Aldershot. It was one of a pair, Accrington Stanley making the fateful decision to purchase the other as it was the cost of transporting and assembling this that ultimately created the crippling financial problems that caused them to fold in 1962.

## Terracing

The stand that Swindon bought was rather modest, the upper tier of seating above the terracing little more than a slither as there were just five rows, but the main stand seating area wasn't much bigger. It did however make the County Ground one of the more compact and functional stadiums in the lower divisions.

In 1971 the current main stand was opened. Similar in design to stands built at Chester and Bristol City around the same time, it was actually built behind the old main stand and consisted of a single tier of seating with two roof supports across the front.

The first row of seats was several metres higher than pitch level. This not only maximised the space available underneath the stand, it also meant that much of the seating from the old main stand could be retained, albeit the seats were no longer covered by a roof. The stand was first used for a Football Combination match against QPR on 14 August 1971 before Charlton visited for a Division Two fixture the following week.

The total capacity of old and new was 5,238 and it increased the County Ground's capacity to 32,000. Indeed that figure was reached when Arsenal visited in the 3rd round of the FA Cup that season, the ground's record attendance.

### Regulations

The seats from the old stand were eventually cleared and the area in front of the new stand remained unused until the 1980s when four metal stairways were built to help the club comply with new regulations after the Bradford Fire Disaster. Another impact of Bradford was the closure of the seated area of the Shrivensham Road stand as it was built mainly of wood and had narrow stairways.

In 1990 the Town End terracing was seated as the club prepared for its first ever season in Division One having beaten Sunderland in a play-off final at Wembley. However a few weeks later the Robins were demoted two divisions, reduced to one on appeal, after they admitted 36 charges of breaking League rules, 35 of which related to illegal payments to players.

Swindon eventually made the top flight in 1993 but only lasted a season, finishing bottom of the Premier League and conceding 100 goals in the process. By that time a lower tier of seats had been added to the main stand.

The following summer further changes were made to the County Ground. The Shrivensham Road stand was demolished and replaced with a steep modern cantilever stand holding almost 5,000 spectators.

Meanwhile there were plans to

replace the Stratton Bank terrace with a new covered stand but these were rejected. Instead the club applied for a license to keep the terrace open for another year but this proposal was rejected too. The uneasy compromise was to install 1,600 seats on the terrace as a temporary measure. Twenty years on and the Stratton Bank, now holding over 2,000, is one of only two pitch wide open stands in the Football League, the other being our own Brian Moore Stand, although there are smaller open seated areas at other grounds.

The past two decades have been turbulent times for the Robins. Relegation from the Premier League was followed by another relegation in 1995. Since then there have been three further relegations, three promotions,

two appearances at Wembley, two spells in administration, Willie Carson as chairman and Paulo Di Canio as manager. Life as a Robins fan has rarely been dull.

In between there has been talk of leaving the council owned County Ground for a new stadium and more recently of converting it into a 25,000 capacity venue. Realistically it would seem that the club's future is at the 14,700 capacity County Ground with any future developments focused on modernising the stands behind each goal.

Last week the ground was declared an asset of community value. This means that it has protected status and if the site is ever put up for sale the Swindon Town supporters trust would have six months to prepare their own bid for it.



19 March 1994  
FA Premier League  
SWINDON TOWN 2 MANCHESTER UNITED 2  
Attendance: 18,102



When United visited the County Ground on their way to a second successive Premier League title the Robins were rock bottom of the Premier League. They had won just four games and had lost 7-1 at Newcastle the previous week.

A rout was expected and when Roy Keane gave United a twelfth minute lead commentator Clive Tyldesley pondered, "How many more to follow?"

Swindon didn't follow the script. A tempestuous afternoon saw Mark Hughes involved in a confrontation with the Shrivensham Road side before Luke Nijholt equalised for the Robins with a deflected shot. Paul Ince restored United's lead but they were reduced to ten men when Eric Cantona was sent off for stamping on John Moncur.

With just seven minutes remaining Jan Aage Fjortoft stabbed home a late equaliser for Swindon who, having lost 4-2 at Old Trafford in September, were one of only two teams to score four league goals against the champions that season. The other team was Oldham, who were also relegated.



P

PRIESTFIELD  
CONFERENCE & BANQUETING

The perfect venue for any occasion!

Meetings, Dinners, Parties, Weddings,  
Life Celebrations.



P  
PRIESTFIELD

For more information please contact  
Priestfield Conference and Banqueting office on:  
Tel: 01634 350205 | email: [conferencesales@priestfield.com](mailto:conferencesales@priestfield.com)

[www.priestfield.com](http://www.priestfield.com)

# match action



Saturday 11 January 2014 / Weston Homes Stadium  
Sky Bet League 1 / Attendance: 3,819



## COLCHESTER UNITED

Watt 50, Morrison 87,  
Sears 90+3

**Colchester:** Walker, Wright, Okuonghae, Eastmond, Watt (Sears 88), Morrison (Bonne 88), Bean, Eastman, Wilson, Vose (Olufemi 86), Garbutt

**Unused subs:** Cousins, Sanderson, Spence, Kent



## GILLINGHAM

0

**Gillingham:** Nelson, Martin, Barrett, Legge, Harriman, Dack (Smith 64), Hessenthaler (Weston 74), Gregory, Fagan (Akinfenwa 64), Kedwell, McDonald **Unused subs:** Howard, Linganzi, Davies, Marriott

**Main image:** Cody McDonald appeals for a penalty  
**Left:** Connor Smith attacks the U's defence

*Images: Courtesy of KM Group*





**Main image:** Danny Kedwell battles with Dominic Vose  
**Above:** Craig Fagan delivers a cross from the right  
**Below:** Peter Taylor makes a tactical change

*Images: Courtesy of KM Group*

U's	Match Stats	Gills
3	Goals	0
24	Total Attempts	8
14	On Target	2
9	Off Target	3
1	Blocked	3
0	Hit Woodwork	0
7	Corners	1
2	Caught offside	1
3	Fouls conceded	12
1	Yellow cards	1
0	Red cards	0





★ ★ ★ MATCH DAY INTERVIEW ★ ★ ★  
PHILL CATTERICK SPEAKS TO THE GILLS NUMBER 15 . . .

# BRADLEY DACK





... I got released at Charlton when I was younger and I thought that could have been the end but it's not the end because football is all about opinion ...



Having come through the youth system at MEMS Priestfield Stadium, Bradley Dack has certainly showed that being self-sufficient as a football club can reap its rewards.

The midfielder, who turned 20 on New Years' Eve, has been yet another success story of the club's ever improving academy programme, and he is the first to praise the efforts of Schoolboys Development Manager Bryan Bull, Development Manager Mark Patterson, and Academy Manager Darren Hare for the part they have played in ensuring he got his opportunities in the first team.

Speaking to me on Monday he said: "I give a lot of credit to Bryan, Mark and Darren because they really have helped me develop my game since I was 15 years old when Bryan took me on, Mark gave me a scholarship and Darren had me in the youth team.

"They gave me the pointers and the experience to go on and play in the first team and if it wasn't for them I wouldn't be where I am now.

"It's a really good set up down there at the minute.

"They put in an awful lot of hard work off the pitch and behind the scenes which people won't

know about. The work they do is top draw and there a few pictures down at the training ground which show the amount of players they have brought through since Matt Jarvis in 2003.

"It's getting close to 30 which is a great achievement."

However Bradley is adamant that figure will be added to again soon. Jake Hessenthaler has recently graduated himself, and Dack says there are plenty of other players starting to knock on the door of the senior squad.

He added: "There are a lot of boys knocking on the door and that's testament to the way we bring players through from the academy at Canterbury which is set up for players from eight years old through to 16.

#### Sessions

"That's run brilliantly with training sessions every Tuesday and Thursday.

"The senior staff and the first team do a bit of work down there every now and then, it's perfectly run for any young player - it's a great atmosphere to come in to.

"There are times when you do think as a young player if you will break in to the first team because you're not good enough.

"I got released at Charlton when

I was younger and I thought that could have been the end but it's not the end because football is all about opinion. Someone may not think your good enough and somebody else might believe you are the next Jack Wilshere."

The inclusion of Hessenthaler in to the first team has been a huge positive in the last couple of months, and Dack is pleased to see a fellow youth graduate, as well as a close friend, join him in the first team.

He said: "It does feel good; we had a good partnership in the youth team and Jake is a top player. He's in the Michael Carrick mould; he's good enough to play at the top level, he's doing really well and I'm happy to see him in the team.

"We've played together for a long time now so the more players that get in the team, having played with them before, will certainly help me.

"Hessy's short passing is brilliant, he has done so well since he came in to the team and it looks like he has been there for three or four years. He never gives the ball away, he makes us look bad!"

Nearly 18 months has passed since Dack made his debut for the club when the Gills travelled



to Bristol City in the first round of the Capital One Cup last season, with Dack coming on as a second half substitute in place of Ben Strevens.

Bradley recalls the game well and says it's a moment he will never forget.

He added: "It was a special day at Ashton Gate, I remember it like it was yesterday. I got half an hour and to beat a Championship team as a League Two side was fantastic.

"It was a bit daunting to start with as I didn't really know many of the lads, I knew their names but not well.

"It was a really good experience and I will always remember it.

"You get a real buzz on match day, no one can explain it. Going out there on a Saturday attempting to get three points is a real adrenaline rush and hopefully I get that feeling for the rest of my career."

To the present day and Dack has progressed his game further this season, producing a string of fine displays in the centre of midfield alongside Hessenthaler and Steven Gregory, and he revealed a consistent run of games

has certainly aided his match sharpness.

He said: "Just a run of games has helped; you get match sharpness and those four or five games I did play has given me a bit of a boost and I feel like every time I go out there I'm going to get a chance to score or create an opportunity.

"There is definitely a difference between Leagues One and Two; there are a lot of good players and teams in this division such as Sheffield United, Wolves and Bristol City and we are mixing it with them and we have shown that we can beat the top boys.

#### Difference

"The teams want to get it down and play, you might get more time behind the half way line, but once you get over it it's a bit tighter and there is more one and two touch play.

"People get in your faces a bit more and that's when you have to be smarter and look for little one touch passes around corners and lay-offs. That's the main difference in my view.

"We didn't play too well away against Wolves but that was a different game; I haven't found it

too bad. It took me a while to bed in last season in League Two but I feel I have started this season well."

Dack has had an extra spring in his step since Peter Taylor arrived as Manager, and Bradley said the former England Under-21 boss has had a big effect on his game considering the record he has in developing young players.

He said: "He is really good with the youngsters; he's been good with me and especially Jake. He's told us little points about what we can do to improve and what we need to do.

"A lot of people say if you're good enough you're old enough and age shouldn't come in to it. It helps having the likes of Craig Fagan and Adam Barrett about.

"Their experience in the game gives you more of an insight as to how you should play at this level." I asked Bradley what the Manager has told the players this week as they look to recover from the 3-0 defeat against Colchester last Saturday.

He replied: "He's told us to do the simple things right, we need to try and keep our shape a little better and put more pressure on



## ... Going out there on a Saturday attempting to get three points is a real adrenaline rush ...

the ball and get more tackles in.

"We need to get higher up the pitch and hopefully that will benefit us; on Saturday we didn't do that.

"I don't think we played too badly in the first half, but in the second we didn't get going.

"It wasn't the worst performance in the world but it was a lot worse than we played against Wolves on the Friday night.

"After they got that first goal it gave them a lot of momentum and they started to knock the ball about a bit and we didn't keep our shape as well as we can.

"I thought the first goal was a little bit unlucky because it went through their attacker's legs on the line, he's blocking Nelson's view and that's interfering with play and it went against us."

### Example

The offside rule has been called in to question again, with the goal at Colchester a secondary example to the one which occurred in the Premier League during the match between Newcastle and Manchester City, and Dack admitted it's a rule which needs to be communicated more clearly with the players.

He said: "I think it's still a pretty grey area and it's come up again in the Premier League and it needs to be addressed because we need to know the exact rule so the referees and players are clear.

"Saturday showed that the players thought he was offside and the referee didn't.

"Something needs to be done about that."

However Gills have a chance to respond in the best possible way this afternoon by overcoming Swindon Town, and Bradley believes the visitors won't be relishing the journey.

He said: "They are the kind of games you want to play in; Swindon are a good side, we played them earlier in the season and they enjoy knocking the ball about.

"I'm sure they won't fancy coming to Priestfield - it's a hard place to come and we seem to be getting the best out of each other at home in the last few weeks.

"For them it's going to be tough and we need to go back to how we played against Wolves and hopefully we should come out of the game with a result.

"It should be a good game; they know they will have to work hard to get something out of it. At home we're in a good run of form and scoring goals which is really

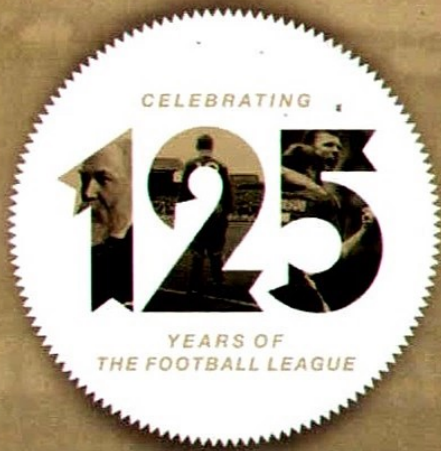
good. It's not the worst time to play Swindon, we will look forward to it.

"The supporters have been great this season and hopefully we can get a few more wins home and away. I thought at Colchester we let them down a bit but hopefully we can bounce back against Swindon and give them something to cheer about.

"At the minute we are going in to every game thinking we will score more goals than the other team. When you have players like Keds, Cody and Bayo who can all score at this level it's a real asset to have.

"You know if one isn't playing then you know the other two will do the job. Cody's in good form at the minute, he's hard to stop."





NATIONAL  
FOOTBALL  
MUSEUM

# GAME CHANGERS:

EXHIBITING 125 YEARS OF  
THE FOOTBALL LEAGUE

20 SEPT. 2013 – 27 APRIL 2014

Game Changers' tells the story of the world's original league football competition and its place at the heart of our nation's sporting culture. It brings to life the personalities and events that have shaped league football, both on and off the pitch, while each of The Football League's 72 member clubs has an item on display.

See the exhibition for free at the National Football Museum in Manchester.

For more information visit [nationalfootballmuseum.com](http://nationalfootballmuseum.com)

**FREE ADMISSION**  
**OPEN DAILY**

**FL125.CO.UK**  
**#FL125**



Supported using public funding by  
**ARTS COUNCIL  
ENGLAND**



**MANCHESTER  
CITY COUNCIL**





Don't miss the springboard to Brazil

# ENGLAND

# v Denmark

Wednesday 5 March 2014, 8pm

Wembley Stadium

Tickets from £25\*

Family tickets from £60\* (two adults/two children)

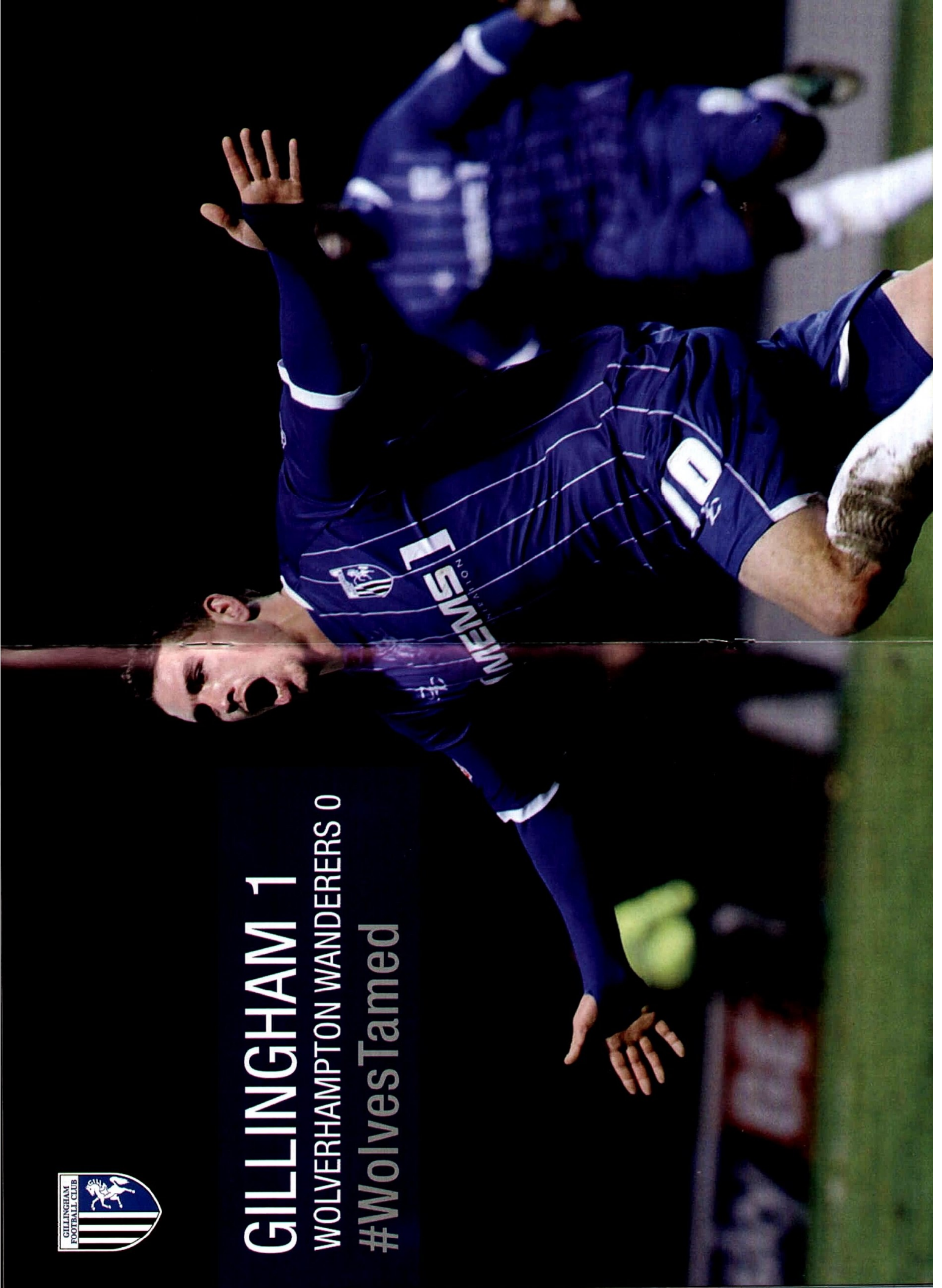
**ON SALE NOW** at [TheFA.com/tickets](http://TheFA.com/tickets)

\*subject to availability





**GILLINGHAM 1**  
**WOLVERHAMPTON WANDERERS 0**  
**#WolvesTamed**



# DO YOUR CHANGING ROOMS NEED CHANGING?



**TIRED OF PATCHY PITCHES, FREEZING FANS AND SHODDY SHOWERS?**  
We're giving 11 grounds a makeover. If you know one that needs  
some TLC, send us a photo and tell us why it needs help.

**ENTER NOW AT [f/CAPITALONEUK](https://www.facebook.com/capitaloneuk)**

**Capital One**

**THE CREDIT CARD THAT SUPPORTS THE SUPPORTERS.**



**OFFICIAL CREDIT CARD OF  
THE FOOTBALL LEAGUE.**

©Registered mark of Capital One. ©2013 Capital One. Capital One (Europe) plc: Registered Office Trent House, Station Street, Nottingham, NG23HX. Registered in England and Wales. Company Number: 3879023. One Winner will receive up to £75,000 and 10 runners up will receive £5,000 each. Prize money is solely for the purposes of renovating existing facilities. The prizes are subject to terms and conditions. Nominations must be made by 24/01/14. UK only. See T&Cs for more info.



# SIMON KING

LEGENDS INTERVIEW by Phill Catterick

His performance in the League Two play-off final against Shrewsbury in May 2009, which also won him a deserved 'Man of the Match' award, was a display which all of us were hoping would be replicated for seasons to come.

However just weeks after that memorable day out at Wembley, which also saw him rewarded with a new three year contract, he suffered an injury at Bromley which would cruelly deny him a prolonged career at Priestfield.

Had Simon King not been stretchered off during that infamous pre-season fixture who knows what he may have gone on to achieve? But, for many, he still remains one of the most cultured centre-backs that has ever worn the shirt.

In typical determined fashion Kingy refused to let the injury beat him. He eventually did recover, scoring an unforgettable goal against Torquay at MEMS Priestfield Stadium in April 2012, which was greeted by a deafening roar from the Gills faithful.

After a short stint at Inverness Caledonian Thistle in Scotland, King retired from the professional game in May of last year. However, a well-known contact in Mark Stimson gave him the opportunity to continue playing; now plying his trade at Ryman North side Thurrock.

### Delighted

Prior to our game against Walsall last month King joined us in the Legends Lounge and was delighted to be back at the club.

He said: "A lot has happened for me personally with retiring but it's always good to come back, this place is very close to my heart. I had many good years here but also some of the toughest times of my career.

"The fans were great to me and they just want to see commitment, I always tried to give my best and I think they appreciated that."

King signed for Gills in June 2007 for a fee of £200,000 by Ronnie Jepson, and the centre-back said he felt it was the right time to embark on a new

challenge after deciding to move on from previous club Barnet.

He said: "I spent four years at Barnet and I was developing as a centre half and they offered me a good contract but I felt I needed to push on in my career and better myself.

"They put me on the transfer list but I didn't leave on bad terms, it was all good and they understood that I wanted to better my career.

"I remember Hussy [Andy Hessenthaler] coming to Barnet and I know he was good friends with the Chairman and he put in a good word for me.

"I heard a bid had gone in, I looked around the club and I couldn't really say no once I got the contract sorted. It's a big club around this area and it's who I wanted to sign for."

Within the space of two years Jepson had been replaced at the helm by Stimson, and King would prove integral to the team that helped Gills reach the play-off final against Shrewsbury at Wembley Stadium.

Simeon Jackson's last minute winner clinched promotion, and



Simon was honoured to be able to experience the emotions that only a trip to Wembley could provide.

He said: "That season was brilliant for me, I really enjoyed it and to this day it's probably the best season in football that I had. I was at that age where I had matured as a centre half, I felt the back four were pretty solid and me and big Garry Richards built up a good partnership.

"We had Roycey [Simon Royce] behind us so everything fitted in well. I was fortunate enough to play nearly every game which is good because you get match sharpness.

"That Rochdale game [the semi-final second leg] still gives me goose bumps, the fans ran on the pitch. It was a bit scary at the time because fans grab you and everything but you keep those memories forever and you'll never forget them.

"I got the buzz knowing we would be playing at Wembley and as a kid growing up it's the one thing you would love to do.

"I remember the build-up; it was brilliant and unfortunately with the Wembley game the atmosphere is a bit of a blur. I've watched it back but I couldn't really remember it with the whole

euphoria that surrounded the match.

"On the day we showed what a good footballing team we were, there were stages where we kept it and looked comfortable. We deserved it and probably deserved to win it more than 1-0 and it was all capped off with getting 'man of the match' and I will never beat that feeling.

"A lot of friends and family came to the game and I will never forget that day.

"It's my most treasured moment. Your debut in the professional game is special because you work so hard all your life to get there but the promotion is the best moment in my career."

#### Prime

Sadly that would be the last time supporters would see King in his prime, the defender suffering a terrible ankle injury which saw him ruled out, initially until Christmas of 2009, before finally making his return to the first team in February 2011 against Rotherham as a first half substitute.

I asked Simon if, initially, he felt the injury would keep him out as long as he was.

He replied: "No I didn't to be honest. I went up for a header, got knocked slightly off balance

and landed awkwardly on my left ankle.

"The first scan I had was very deceiving because they said there was no damage which, in my mind, was great. I thought I would be OK in a couple of weeks when the swelling goes down.

"I was on crutches for a couple of days and it ballooned up huge and I thought something wasn't quite right. I went back for a second scan and they said there was quite a lot of damage.

"They then told me I would be out until after Christmas which was, for me, a long time because I had hardly missed any games before the age of 26.

"I was doing my rehab and I was a bit naive because I thought I would be alright but the pain never really went and I then knew there were problems. Unfortunately there was cartilage damage which doesn't heal itself so it was always going to be an uphill battle because my ankles were in quite bad condition.

"That was the final nail in the coffin; it was too much to recover from.

"It was such a shame and people say 'what if,' but that's all speculation and you never know what could of happened and that is my biggest regret.

"I've got past that period; I can't beat myself up about it. What was meant to be was meant to be. I would have loved to have kicked on because I thought I was playing the best football of my career at that stage, but unfortunately it was cut short."

However there was one last moment to savour for the Gills number five: the centre back was brought back under Andy Hessenthaler (King having spent just over a month on loan at Plymouth) as the club looked to seal a play-off place in the 2010/11 season, and Simon responded by scoring in the 2-0 win over Torquay in February 2012.

Considering the amount of rehab, pain and personal turmoil he had to endure, that goal goes down as one of his career highlights as he explained:

"Apart from Wembley that was one of my most treasured





moments," he said. "It was like a relief in a way, after everything I had been through because it was a tough time and anyone that knows me did know I struggled massively through that injury.

"I did try to remain upbeat because that's the type of character I am, but it was hard. Just the fact I wasn't playing Football which is something I loved doing, but scoring against Torquay and hearing the fans cheer my name in the Rainham End was special.

"A lot of the fans kept me going with their well wishes and they supported me all the way through.

"I will never forget that day, it was very enjoyable."

After leaving the club King travelled north of the border to join Inverness in the Scottish Premier League, and although he started the season well, he then suffered more heartache as his right ankle was similarly injured following another innocuous fall.

He said: "I wasn't sure what to do at the time, not getting back in the team at Gillingham and at that stage I wanted to get back to the player I was before the injury.

"I lost a bit of confidence; I should have just accepted it at the time and tried to adapt my game. It was the first time I had

been released in my career which was a bit of a knock, but that's football.

"Terry Butcher rang me up and I thought 'give it a go.' It was a fresh start, I knew I had to manage my ankle and I was at the age where pros tend to get looked after a bit more.

"To be fair I got fit and started playing alright but then I had a similar thing with my right ankle. I landed awkwardly and I thought it was a case of *deja vu*.

#### Unbearable

"I had another operation on the right ankle, started rehab and it got to the stage where I wasn't looking forward to going training, I was in so much pain and it got too much, it was unbearable and I've been living with pain in my left ankle for three or four years and when the right one went aswell it was time to call it a day."

However, following a few months out of the game, Simon started to get himself fit again and received a call from a former Manager who offered King a chance to remain in the game.

He said: "I had a good four or five months out completely, piled on the pounds and started eating!

"I've lost a bit of weight since then but it was a tough period because football is all I've known.

Mark Stimson got in contact as I'm local to Thurrock and he knew I had started going to the gym and getting myself fit again.

"I did miss that side of it and he said if I wanted to go down and have a couple of sessions and see how the ankles were then fine.

"I thought I'd give it a go, I'm training once or twice a week. I have my match fitness and my ankles are holding up alright.

"Football sucked me back in, I love doing it and I'm enjoying it. There's not too much pressure on me and I can look after the young lads around me and give them some of my experience and knowledge."

I asked Simon if he has any ambition to become a coach or, if not, remain in the game in a different role.

He said: "If you had asked me that a few years ago I always avoided the question because I didn't think coaching was in my personality but, as I've got older, I'm a lot more vocal on the pitch.

"I will try to get my badges done in the summer and see where that leads. I still have a few friends in football so maybe there is something around the corner and I'd like to stay in the game in some capacity."

You can see Simon's Legend interview in full on Gills Player.



# The “Customer” Is Always Right ...

by Eddie Allcorn

If there is one thing people that attend football matches really resent being labelled its “customers”. We really, really aren’t - we are supporters that support the club (the clue is cunningly hidden inside the word “supporter”) and fans who are fanatical about the team (ditto).

However there is one aspect of being a “customer” that might appeal to all of us from time to time, namely that in a competitive capitalistic world the slogan “The customer is always right!” is used to illustrate the fact that care should be taken to keep your customers happy enough to come back again to repeat their purchase of whatever goods or services you might be providing...

It would be fair to say that over the years within the Football Industry this has not always been the case and even now the portrayal of the average football fan in the media is often a lazy stereotype of an amorphous mob of perpetually demanding, utterly unrealistic, gurning, wide-eyed childlike simpletons fit only to be treated like cash cows bereft of any semblance of perspective or

insight, unable to grasp even the most basic of concepts regarding how the actual giant jolly circus is managed and organised. At least the caricatures are less objectionable than those in the 1980’s which purported all fans to be riotous hooligans, but it still begs the question can fans be a valuable resource in the decision making processes at their particular clubs?

## Experienced

Now perhaps we might have to draw a distinction between those people that actually attend games rather than simply consuming their football via television hundreds of miles away from the ground, but given two thirds of current League clubs have experienced catastrophic financial and managerial problems that have threatened their very existence over the last thirty years, it is not exactly a shock that most supporters are both eminently realistic about the potential at their particular football club and fully aware of the many pitfalls that have ambushed so many others.

Obviously in the heat of the moment football crowds can be

vengeful, crude, excitable and downright bonkers, immediately stuffing a microphone in their face at an emotional moment and asking them an inane question is unlikely to much add to the sum total of human knowledge, but in the cold light of day you’ll get something altogether more measured and reasoned.

Clearly there are the eccentrics and the downright contrary buggers out there, but if you ask enough people and analyse the general vibe it is arguable that had those making the big decisions over the years done so, they might not have come such a cropper quite so often.

Now when it comes to picking the team and tactics, transfers and motivating players it is clear that you have to appoint a manager to manage and let them get on with it, the failed online experiment at MyFootballClub (Ebbsfleet United 2007-13 from a peak of 31,000 members to less than 1,000) illustrated the point graphically, but that doesn’t mean that supporters shouldn’t play a more significant role than they often do. There are some notable exceptions, at Swansea City the Supporters Trust holds 20% of



the club and have a direct role in running the club which has gone from strength to strength over the last decade. In Germany supporters are very involved in the decision making process too, and with their domestic game booming and having avoided the bust of the Spanish, Italian and English league they could perhaps provide a realistic model.

Now the average fan might not have expertise in running a football club themselves but if you aggregate the views of say 5,000 supporters it can certainly prove valuable when those in the position have to actually decide on policy. The game is littered with monumental errors of judgement from the powers that be which had ordinary fans bellowing their opposition at the time and are now able to mournfully point out "I told you so". From George Reynolds' catastrophic 25,000 Arena vanity project that annihilated Darlington FC to the scandalous decision to award the 2022 World Cup to the fundamentally unsuitable Qatar with FIFA now faced with having to tear up the global sporting calendar for three years or start again, you are left wondering what in the world possesses these people to make such insane judgements?

Now obviously asking fans about picking teams and tactics might prove to be somewhat fraught with difficulties, everyone has their own pet theories, players and set pieces and they are not usually privy to crucial information regarding injuries, fitness and the minutiae of life on the training ground. Nonetheless if you'd asked 1,000 fans whether Fernando Torres was worth £50m when Chelsea decided to sign him from Liverpool (or to be fair Liverpool's reinvestment of £35m of the proceeds in Andy Carroll) the alarm bells would have sounded (assuming you could hear them above the gales of laughter). Ex-professionals might get snooty when anyone that hasn't played professional football at a high level challenges the established orthodoxy at the time (unless their name is Mourinho), but you also have to question what genuine insight or imagination do some of the established pundits actually provide that anyone in the pub couldn't replicate? Certainly not

the bland Shearer, complacent Lawrenson or big-nosed Maidstone-born Andy Townsend. Gary Neville would eat them for breakfast...

If you ask most fans about tactics there is often quite a variety of opinion, but people do tend to agree that they like their team to play with two strikers, particularly at home, they like to "leave someone up" on the halfway line when defending corners, they like the taker of corners to be able to "beat the first man" and they hate it when teams try to "sit on" their lead because we all know from painful exasperating experience that such policies tend to end in tears unless Tony Pulis is the manager and the defence is hewn from the same stone that the 95-96 Gills defence was!

#### Debate

Sometimes supporters just want things left well alone, they hate perpetual tinkering and the FA Cup is the latest competition to stumble into the ongoing debate about modern football. Every year is the same, the competition is routinely denigrated and managers risk immolation by angry fans if they put out a below par starting XI and then lose. Sam Allardyce was the latest manager to treat the competition (and 3,000 travelling Hammers that made it to Nottingham on a miserable noon Sunday kick-off live on ITV) with utter contempt and to the delight of fans across the nation it blew up in his face at Forest 5-0. The cunning plan to rest senior players I guess succeeded in keeping the score in the League Cup semi-final first leg down to single figures, but it left us all assuming had both games been in the Premier League, players would not have needed resting (they will now play a modest 45 games in total this season).

The truth is that the decline in the FA Cup in terms of actual attendances, as opposed to perceptions from certain managers, actually occurred between 80-81 and 81-82 when average crowds plummeted from 16,312 to 11,506. The draw obviously plays a significant role but subsequent attendances have been remarkably consistent over the last thirty years despite smaller lower division stadia reducing the flexibility to pack in

an extra 10,000 for a "big" cup tie. League attendances continued to fall until their nadir in 1985 before their revival. Cup crowds were steadier but nibbled away at until 99-00 (10,765) where, minus Manchester United due to the FA's doomed bid for the 2006 World Cup, the competition was left looking tarnished. Since then crowds have climbed back to the norm for the last three decades. (12-13 12,917). Both League attendances (between 29 and 30 million) and those in the FA Cup have been on a consistent plateau for over a decade. Quite an achievement given the global financial meltdown. Many would just say accept the FA Cup for what it is now, a genuine opportunity for clubs as small as Wigan to finally win something tangible, a huge attraction when the draw throws up an attractive tie and in dire need of imaginative pricing when it doesn't.

Many other current issues within football might not have become so divisive had owners and chief executives listened to their core audience. From changing the kit to red, ditching their badge, denying their history and sacking their manager at Cardiff to antagonising everyone at Hull with a madcap proposed name change, the message is simple, take heed of the fans. They are more sophisticated and realistic than you think, they'd like cheaper ticket prices and the choice to stand at games, they don't want the club to get themselves £163 million in debt like Bolton chasing the dream and they like to see their team play attacking football. Success is tougher to guarantee, but contrary to many in the media they appreciate they won't be winning the Champions League any time soon (although avoiding a third relegation in seven years would be nice!). The majority of fans are self-aware, able to laugh at themselves, experts at gallows humour when the wheels fall off and resilient in the face of genuine threats to the future of their clubs. Virtually all the problems encountered at the myriad of League clubs can be laid fairly and squarely at the feet of the chief executives, owners and administrators over the years, perhaps it is time they listened a bit more to their customers, after all we are invariably proved right eventually!

# SHAPTER AND WORSE

The enduring rivalry between Gillingham and Swindon has been well documented, although through the passage of time the enthusiasm has become rather one-sided.

This is partly because Swindon have the sort of local spats with the likes of Oxford and Reading of which we have been deprived since Maidstone's ungainly departure from the League in 1992. In addition, Gillingham had rather more cause to be aggrieved at the events which sparked the animosity during the 1979 promotion chase.

You would need to be over 40 to have witnessed the catalyst, which came late in the first half of a 2-2 draw at Priestfield in 1979. Gillingham squandered a two goal lead and striker Danny Westwood was sent off (in an era when red cards were rare), seemingly on the say-so of Swindon's Ray McHale. This seems rather implausible but it ignited a fiery contest that featured an attack on the referee by an enraged elderly spectator, an act that prompted the fifteen year imposition of security fences at the ground.

If that dropped point didn't cost us promotion then the defeat at The County Ground in May certainly contributed. Eye witness reports suggest a systematic targeting of Terry Nicholl by future Gillingham full-back Andy Ford, the result being Nicholl's dismissal for his

first retaliatory challenge. Over 4,000 Gillingham fans looked on in stunned disbelief, and after a sorry 3-1 loss events boiled over in the tunnel and a court case ensued.

I was too young to travel but distinctly recall listening in horror to the reports of the game on Radio Medway. A seemingly unassailable automatic promotion place slipped from our grasp and for many years the mere mention of the names McHale, Mayes, Rowland and Kamara was sufficient to induce twitching among those still smarting at missing promotion by a single point. No-one ever dared speak of the two officials responsible, David Hutchinson and Lester Shapter.

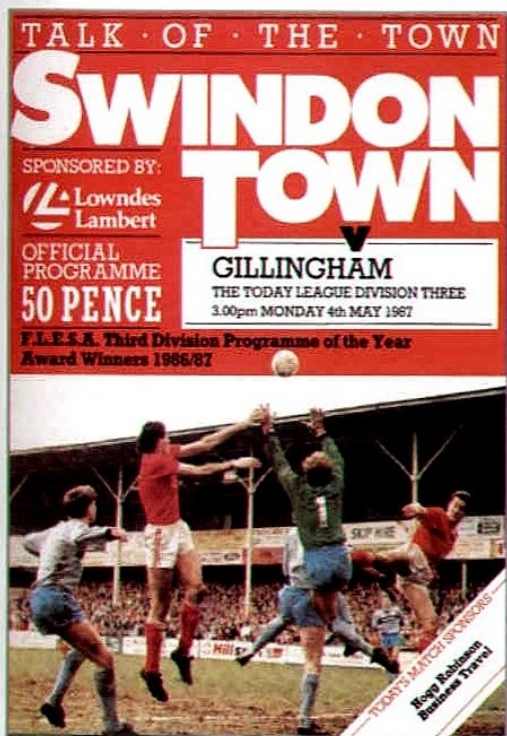
## Atmosphere

Subsequent clashes generally took place in a more subdued atmosphere as both sides went into decline, and Swindon were relegated in 1982. We were dramatically re-acquainted in the 1986/87 season after Lou Macari's resurgent side swept to the Fourth Division title. The game at Priestfield at Christmas was eagerly anticipated, and the highest league attendance since those fateful 1979 clashes turned up to watch a wretched capitulation. Gillingham were second in the table and unbeaten at home, but froze horribly on the big day and were predictably brushed aside 3-1.

At least everything passed amicably off the pitch, aside from some animated gesturing when both teams were ill-advisedly requested to applaud the opposition supporters pre-match. It was rather an inflammatory idea; we really should have stuck to the police dog display team which traditionally had a calming effect on aggravated crowds thanks to the cautionary message it sent out. Nothing focused a would-be hooligan's mind more than watching a police dog handler being mauled by his mutt as a demonstration of canine power.

The return in Wiltshire came on May Bank Holiday Monday. Swindon were assured of a place in the inaugural play-offs but Gillingham were stuttering to the season's denouement. A goalless draw at home to Wigan had seemingly consigned us to another year in Division 3, and only maximum points from our final two fixtures would salvage fifth place and some unprecedented end of season excitement.

Around a thousand Gills fans travelled west and were housed in an advert laden multi-pillared stand along one side. Condemned seating above provided a low roof and excellent acoustics, which were certainly required to compete in a boisterous atmosphere as the home support prepared for the onslaught of the play-offs. They favoured a co-



... Tony Cascarino came close to doubling the lead when his towering header hit the bar and he was just unable to sort his feet out in time to convert the rebound ...

ordinated bouncing of "Lou Macari's red and white army" between the tiny covered Town End and large open Stratton Bank behind the two goals. They were mid-flow when ex-Robin Howard Pritchard curled Gillingham into a fourth minute lead. He was not universally adored before his right wing cross floated over Fraser Digby into the net, so this guaranteed him an afternoon of colourful abuse from the home terraces.

Gillingham went on to dominate the first half of a scruffy game and Tony Cascarino came close to doubling the lead when his towering header hit the bar and he was just unable to sort his feet out in time to convert the rebound. The need for points dictated the urgency in our approach and there is no denying that we deserved a half time lead.

The momentum switched and Swindon equalised shortly after the break. Big Dave Bamber went sprawling optimistically in the penalty area and Mark Jones dispatched the spot kick. A second penalty appeal went unrewarded when Karl Eley appeared to block a Chris Kamara shot with his hand, but the home side finished the stronger. A lone point from a 1-1 stalemate was seemingly insufficient to salvage our season and we drifted away disappointed, oblivious to the carnage unfolding on the Magic Roundabout outside the

ground. The junction was voted the fourth scariest in the UK in 2009, but that didn't take into account the running battles that left a couple of Gillingham coaches in urgent need of glaziers shortly after the final whistle.

#### Influence

Swindon's influence on our season was a long way from over. That evening, Notts County unexpectedly lost at home, which meant if we could better the results of County and Bristol City on the final weekend we could still sneak into the play-offs. Both drew, the latter 1-1 with a Swindon side fighting for nothing other than West Country bragging rights. Gills beat Bolton at Priestfield to secure fifth place and a two-legged date with Sunderland.

The play off adventure cannot be adequately summarised in two paragraphs. The tension in finally arriving was shattered by a new anxiety to claim tickets (even for season ticket holders) and it was undoubtedly the most exciting fortnight I'd known following the club.

Having shared twelve goals over two legs with the Wearsiders and inched through on away goals, it was inevitable that promotion would depend on a final showdown with the Robins. The programme for the second leg indicated that Swindon felt promotion to be both

their destiny and right, Macari making clear his feelings over the unfairness of the system, while the club outlined their plans to upgrade the Stratton Bank in preparation for Second Division Football.

Following the disturbances just two weeks earlier, a military operation was put in place to avoid a repeat. The Football League entered into the spirit by appointing the loathed Lester Shapter as official for the second leg, an astonishing appointment. Gillingham edged the home leg 1-0 but on a brutal night in Swindon we buckled under a monstrous onslaught from the home side. Eley volleyed us into a 2-0 aggregate lead, but the home side laid siege to our goal in a manner I had never witnessed before. We could have lost 5-1, but we held on for a replay in which we were beaten 2-0 on a miserable night at Selhurst Park, Steve White our new nemesis.

Macari's aggressively optimistic outlook was not misplaced. Ossie Ardiles and then Glenn Hoddle continued the good work after Macari departed for West Ham, and they reached the Premier League for a single season in 1993. Some co-incidental division swapping meant our clubs didn't meet again for twenty years, enabling a considerable cooling off period from those fiery encounters of the 1970s and 80s.

# UNBEATABLE!

- \* Award winning fleet
- \* Great value fares



**0870 870 20 20**



**DFDS  
SEAWAYS**



Matt Davison  
Matt Cole  
Gemma Sterba

The sports  
team for  
**live &  
exclusive**  
radio  
commentary  
of every  
away game

# **BBC KENT**

96.7 FM | 104.2 FM | DAB | [bbc.co.uk/kent](http://bbc.co.uk/kent)



# average attendances 2013/14 stats

	Visiting Fans	Gills Fans Away	2013-14 Average	Highest	Lowest
Wolves	910	1,222	19,862	28,598 vs Leyton Orient 29/12/13	14,989 vs Tranmere Rovers 26/11/13
Sheffield United		617	16,920	19,551 vs Oldham Athletic 26/12/13	14,796 vs Walsall 26/11/13
Bradford City	442		14,759	18,218 vs Rotherham United 26/12/13	12,808 vs Notts County 26/11/13
Bristol City	416		11,654	14,393 vs Wolves 17/08/13	10,085 vs Crawley Town 05/11/13
Preston North End	301		10,292	16,583 vs Wolves 03/08/13	8,492 vs Colchester United 23/11/13
Rotherham United		248	8,526	11,758 vs Sheffield United 07/09/13	7,096 vs Colchester United 02/11/13
Milton Keynes Dons	343		8,501	14,988 vs Coventry City 30/11/13	6,675 vs Carlisle United 22/10/13
Swindon Town		452	8,247	11,598 vs Bristol City 21/09/13	7,133 vs Stevenage 10/08/13
Peterborough United	595		7,127	10,026 vs Leyton Orient 02/11/13	5,707 vs Stevenage 23/11/13
Port Vale		182	7,116	12,601 vs Wolves 31/08/13	4,967 vs Stevenage 14/12/13
Brentford	1,144		7,044	9,783 vs Shrewsbury Town 26/10/13	5,705 vs Walsall 19/10/13
Gillingham			6,161	8,613 vs Leyton Orient 26/12/13	4,591 vs Stevenage 26/11/13
Shrewsbury Town		253	5,663	9,510 vs Wolves 21/09/13	4,194 vs Leyton Orient 07/01/14
Notts County	169	267	5,441	8,564 vs Sheffield United 11/01/14	3,385 vs Oldham Athletic 29/10/13
Leyton Orient	898		5,372	7,123 vs Preston North End 16/11/13	4,092 vs Notts County 17/09/13
Tranmere Rovers		150	4,839	6,251 vs Gillingham 20/12/13	4,100 vs MK Dons 26/10/13
Crewe Alexandra		245	4,803	6,820 vs Port Vale 23/11/13	3,682 vs Stevenage 22/10/13
Walsall	168		4,667	6,519 vs Coventry City 26/10/13	3,522 vs Oldham Athletic 14/01/14
Carlisle United	260		4,532	7,934 vs Preston North End 26/12/13	2,969 vs Crewe Alexandra 26/11/13
Oldham Athletic	255		4,465	7,180 vs Bradford City 01/12/13	3,460 vs Stevenage 11/01/13
Colchester United	779	936	3,794	7,295 vs Wolves 05/10/13	2,597 vs MK Dons 26/11/13
Crawley Town		998	3,275	4,177 vs Brentford 02/11/13	2,407 vs Preston North End 14/12/13
Stevenage	125		2,914	3,325 vs Coventry City 05/10/13	2,167 vs Swindon Town 14/01/14
Coventry City		371	2,406	4,905 vs Peterborough United 26/12/13	1,618 vs Crewe Alexandra 14/12/13
Bristol City	176				
Leyton Orient	273				
Brackley Town	231	175			

## League One 2013-14

Total 2,258,954 (301)	Highest 28,598 Wolves vs L Orient 29/12/13
Average 7,505	Lowest 1,618 Coventry C vs Crewe A 14/12/13





# KENT SCENE

with Nigel Clark



## Skrill Premier

Dartford travel to Salisbury this afternoon having ended a run of ten consecutive league defeats last Friday night when they drew 1-1 at Welling United. Both the goals came in the first-half, Jim Stevenson scoring for the Darts before Ross Lafayette equalised from the penalty spot.

Welling had won the Boxing Day meeting 2-1 at Princes Park and have picked up points in four of their last five matches. They will have been confident of extending that run when strugglers Hyde United, with just four points all season, were the visitors on Tuesday night.

## Skrill South

Tonbridge were the only team in action. After surprise wins at Eastleigh and Sutton United they looked on course for a welcome point away to Weston-super-Mare despite being reduced to ten men.

Gavin McCallum had given Tonbridge the lead with a 28th minute header before Weston finally beat Angels goalkeeper Lewis Carey six minutes later.

Until then they had been thwarted by some fine saves from the former Bristol City player who had spent time on loan at Weston last season. Although Lee Browning was given a straight red for a tackle in the second-half the Angels looked the better team but left with nothing after conceding a last minute penalty for handball.

## Ryman Premier

Maidstone United left it late, finally snatching all three points away to nine men Grays Athletic thanks to a last minute strike from Fabio Saraiva. The Essex side had seen red in each half, goalkeeper Luke Chambers first to go for fouling Zac Attwood. That win saw Maidstone move up to third in the table but the team has come in for some criticism, not least 20 goal striker Frannie Collin. His recent performances have been the subject of debate both on the terraces and on internet forums, much to the surprise of manager Jay Saunders who described such criticism as crazy and reiterated that he considers Collin to be the best striker in the division.

## Ryman One North

Two games but no goals in Ryman One North as Chatham and Erith & Belvedere both hosted games that finished scoreless.

The Dere's could really have done with more than a point at home to Wroxham if they're to pull themselves out of the relegation zone as the Norfolk side are just four points above them having played four games more.

Chatham are sitting uncomfortably close to the relegation zone but will be happier with a point against Needham Market who sit on the fringes of the play-offs and have lost just four games all season. The Chats will also have been pleased with a crowd of 161, their highest in the league this season. It was boosted in part by a group of Sittingbourne supporters looking for a game to watch after their match with Redhill was postponed.

## Ryman One South

The horrendous weather in recent weeks has had an impact on many clubs but three of

our Ryman One South sides in particular have been affected. Most of the roof was blown off the main stand at Folkestone's council owned Fullicks Stadium on 23 December and the ground has been closed since then. Plans were in place to carry out short term repairs and these should be complete in time for this afternoon's home game with Guernsey. Chairman Mark Jenner told the club's web-site that, "A small area of covered roof may be left at each end of the stand so those of us who like to sit under cover may be able to cosy up for the next match." On Saturday two goals from ever-reliable veteran striker Paul Booth helped Invicta to a 2-0 win at Merstham.

Shepway rivals Hythe Town, whose ground is only separated from the English Channel by an MOD rifle range, were also hit by the storms and panels were blown off the roof that covers the terracing. That caused the postponement of their home game with Walton & Hersham. They then lost their home game to Corinthian-Casuals due to a waterlogged pitch before hosting their first game of 2014 when free-falling Crawley Down Gatwick were the visitors on Saturday. The Sussex side had conceded 19 goals in two games but held Hythe to a 1-1 draw, Richard Quigley scoring his first goal for the home side.

Whitstable Town lost 1-0 at Three Bridges at the weekend in what was only their third league game since the beginning of December. That was the first of three matches against Sussex opposition with a trip to Burgess Hill on Tuesday and a visit from Eastbourne Town this afternoon, not that Oystermen boss Nicky Southall is bothered by that, telling the KM, "I couldn't tell you how many Kent derbies we have had already this season and they are a great leveller. We're happy to get out there to Surrey and Sussex."

One thing that does bother Southall is the club's fixture backlog. After Saturday's game Whitstable were left with 26

league fixtures to play before the end of April. Only Cody MacDonald's old club, Ryman One North side Witham Town, have more fixtures to fulfil. Southall feels that the season should be extended but this is unlikely to happen as harsher winters have shown that the Ryman League season is set in stone, regardless of the fixture backlog.

## FA Trophy

Dover bowed out of the FA Trophy with a 3-2 defeat at Eastleigh who they were due to visit again in the league on Tuesday night. For the second time in two matches the Whites were unable to hang on to a lead. They'd thrown away a 2-0 half-time lead to lose 3-2 at home to Bishops Cleeve the previous weekend and on

Saturday were winning 2-1 until the 80th minute before losing 3-2 again. Meanwhile Ebbsfleet also travelled to Hampshire where they lost 1-0 at Havant & Waterlooville.

## FA Vase

Ashford United are the county's last remaining representative in the FA competitions this season and this afternoon they travel to west London to face Hanwell Town who defeated Lordswood in the last round. This is United's third season in the Vase and it's been a marked improvement on the previous two seasons when they lost to Sussex County League opposition at the first stage. By Monday afternoon the two mini-coaches ordered to take supporters to today's game had been fully booked.



Paul Booth

**FOR THE BEST  
VIEW OF THE GILLS**



**KentOnline**  
www.kentonline.co.uk

**KM** **Kmfm**  
KENT'S BIGGEST HITS

# GFC Gems

SPONSOR YOUR FAVOURITE GEM THIS SEASON!

For further information please call:

01634 350350 or email: [sales@priestfield.com](mailto:sales@priestfield.com)

BECKIE



ELLE



TO SPONSOR  
YOUR FAVOURITE  
GEM CALL  
01634  
350350

EMILY



GEMMA



TO SPONSOR  
YOUR FAVOURITE  
GEM CALL  
01634  
350350

GEORGIA



TO SPONSOR  
YOUR FAVOURITE  
GEM CALL  
01634  
350350

IZZIE



JASMINE



TO SPONSOR  
YOUR FAVOURITE  
GEM CALL  
01634  
350350

KARIS



KATHLEEN



KATIE F



TO SPONSOR  
YOUR FAVOURITE  
GEM CALL  
01634  
350350

KATIE M



LUCY



TO SPONSOR  
YOUR FAVOURITE  
GEM CALL  
01634  
350350

SHANNON



TO SPONSOR  
YOUR FAVOURITE  
GEM CALL  
01634  
350350

SUZIE



TRAVEL  
SOLUTIONS  
GUERNSEY

TEQUILLA



TO SPONSOR  
YOUR FAVOURITE  
GEM CALL  
01634  
350350

ZARA



Alan Collins

All the Best Steve Ratcliff



# TRAVELLING NICK *Part 2*

Nick Bradley is a lifelong Gills fan, he grew up in Medway, but now lives in Canterbury. He might just be the most travelled Gills fan on the planet... he certainly suffers from wanderlust.

#### WORST TRIP?

N - "Sevilla vs. Real Zaragoza, the locals very hostile, it was very hot, I sat in the sun, it was bloody hot, it was a terrible game, 1-0 to Zaragoza, I was just on a family holiday in the Costa del Sol, I soon got bored with a beach holiday, hopped on a bus which ended up winding through mountains. At least the stadium was impressive."

"Legia Warsaw vs. Lechia Gdansk, I had a stinking cold, it was raining hard, the ground was grotty and the game grim. Unlike the friendliest welcome I ever got which was at Linfield vs. Cliftonville in the 1980's during the "Troubles" in Northern Ireland. When they discovered I'd come all the way from Kent to see the game they invited me into the social club and plied me with drinks."

#### BIGGEST DISASTER?

N - "In 1985 getting the train all the way from Medway to Belgrade (communist Yugoslavia at the time) and being told the game had been called off! This was pre-Eurostar and had been quite a convoluted journey over several days but thankfully I discovered Split were playing Torino in the Uefa Cup and jumped on a plane and was rewarded with a great atmosphere, loads of flares and making the game just in time."

#### BEST GROUND?

N - "The San Siro in Milan, the Nou Camp Barcelona and the Bernabeu Madrid."

#### FAVOURITE GROUND?

N - "I loved Borussia Monchengladbach for the steep open terraces at their old ground

Bokelbergstadion. Location wise IA Akranes in Iceland was amazing right by a fjord. We had to get the ferry across the mile wide fjord between Akranes and Reykjavik (12 miles away in total) but missed it back after the game and had to get a taxi right back round the fjord instead which was triple the distance and cost over £100 even back in 1995! There is now a bridge."

#### WORST GROUND?

N - "Dukla Prague's ground was a real disappointment, there isn't much there apart from the main stand and an athletics track, I saw them in the Uefa Cup vs. Hearts in 1996, there were only 3,500 there and they'd sold out of away kits..."

#### BEST ATMOSPHERE?

N - "That has to be Penarol vs. Independiente in the Copa

Libertadores in the Centenario stadium in Montevideo Uruguay. It finished 1-2, there was tickertape everywhere, amazing noise and it was pretty volatile given it was a Uruguayan club vs. an Argentine club! The Hamburg vs. St Pauli derby was brilliant too, lots of singing as was Bruges vs. Anderlecht in a tight ground, packed to capacity. It was a highly charged atmosphere throughout, just like the aforementioned Hadjuk Split vs. Torino."

**DODGIEST ATMOSPHERE?**

N - "That was in Costa Rica, the San Jose derby at Deportivo Saprissa, there was massive trouble, the away fans climbed up the huge fence at the front behind the goal and it collapsed onto the pitch briefly holding up the game. Also quite frightening was queuing up for tickets before a game in Addis Ababa Ethiopia. The ticket window was still not open one hour before the game so locals attacked and violently stoned the ticket office, it all got a bit hairy... In Poland after the Wisla Krakow vs. Ruch Chorzow game there were pitched battles running up and down the streets, a proper riot with police with water cannons spraying everyone. At Standard Liege vs. Antwerp there was a huge punch up after the game just outside the ground."

**YOU LIVED IN GERMANY FOR A YEAR (1989-90), WHAT WERE THE BEST ASPECTS OF GERMAN FOOTBALL CULTURE?**

N - "Most of the grounds were relatively full, there were often huge crowds, the bratwurst was tasty and the atmosphere superb. Also compared with England at the time there wasn't the same level of threat of hooliganism."

**COMING BACK TO SEE THE GILLS HASN'T ALWAYS GONE SMOOTHLY HAS IT?**

N - "No! In 89-90 every time I came back we got stuffed. A 3-0 home defeat by Stockport was particularly galling. Worse though was in 1997, I was at a shipping conference in Hamburg, rather than flying straight back to London I booked a flight to Manchester instead to take in our game at Oldham. Unfortunately it was moved to the Friday night at very short notice so I missed the Gills game and spent my Saturday afternoon watching Macclesfield Town vs. Cambridge United. I then flew back to London after a night on my own in Manchester fuming at the Gills."

**WHERE WOULD YOU LIKE TO GO BACK TO?**

N - "Barcelona, because I had to leave early to get my flight home, so didn't see a full match. The kick-off time got changed at short notice due to television and I had to leave before the final whistle."

**WHERE WOULD YOU LIKE TO GO TO SEE FOOTBALL THAT YOU HAVEN'T YET?**

N - "Russia, I've been to Russia several times but never seen a

match. The closest I came was in Moscow back in the Soviet days. I was assured by our tour guide that the old Soviet Union were playing Sweden in Moscow so got the metro out to Lenin stadium, but when I arrived all seemed rather too quiet and then got told the game was actually in Stockholm!!! I've also been to Argentina and Brazil, but it was always off-season, I'd love to see some club football there, especially Boca Juniors, that would be fun wouldn't it?"

**ADVICE TO BUDDING FOOTBALL TOURISTS NOW?**

N - "Give it a go! When I was doing most of my travelling in Europe to football, it was a pretty unusual thing to do back then, it was pre-Ryanair and Easyjet so I often travelled by train on cheap Inter-rail passes. It should be easier now but still you have to check times of games, so often they get changed for tv or whatever. On my travels I've been to places you'd never normally go to just on holiday because of watching football, you get to see different parts of town and meet the locals. Also I'd say give yourself time, have a proper look round the place, not just the football. It's not just about going to Barcelona either, go and see anything! Try and get yourself into the local culture, try the local delicacies at the ground such as sunflower seeds in Hungary, guinea pig on a stick in Ecuador or Bordeaux baguettes and red wine. Enjoy."



# Tommy Reynolds

Photography



Live Events | Portraits | Wedding | Promotional Videos

"Couldn't have asked for a better photographer to capture my wedding"

"Tommy is an absolute pleasure. A true professional"

"Not only were my photos perfect, but it was also a fun experience"



07921 803 997 | info@tommyreynolds.co.uk | www.tommyreynolds.co.uk

Think you've got what it takes?

# STEP UP TO PRO FOOTBALL

with NWKC Academy and  
Gillingham FC



**APPLY NOW  
ONLINE  
for a trial**

0800 074 1447

[www.nwkcollege.ac.uk](http://www.nwkcollege.ac.uk)



Action from the Bees 1-1 draw at Priestfield in August

# Coming Up Next

ANDREW FORD takes a look at who the Gills are up against next.

## BRENTFORD v GILLINGHAM

Sky Bet League One  
Friday 24 January 2014  
Kick-Off 7.45pm

Gillingham's next two opponents met at Griffin Park last Saturday, top-of-the-table Brentford registering an eighth successive league victory with a 2-0 win over Port Vale.

The Londoners have been unbeaten in League One for over three months, during which time they have picked up forty points out of a possible forty-two. The Bees, top of the table since defeating Milton Keynes Dons on the Sunday after Christmas, have won their last eight league matches on their own pitch and have picked up all three points at home on ten out of thirteen occasions, the exceptions being a 0-0 draw against Carlisle and defeats by Leyton Orient and Rotherham.

Brentford have recorded attendances in excess of 8,000 for each of their last three matches at Griffin Park, their highest gates of the campaign. The club's top scorer is Clayton Donaldson, with thirteen goals in all competitions, including three in his last four appearances.

Next week's game will be our second Friday night fixture televised live by Sky Sports this month, following the 1-0 victory over Wolves here, just over a fortnight ago. The last time The Gills played away at Brentford was a League One encounter in February 2010 that ended in a 4-0 win for the home side, after we'd gone three goals down in the first thirty-five minutes. Charlie MacDonald converted two early penalties that afternoon, whilst

the other two goals were netted by current Gillingham player Myles Weston.

Peter Taylor was our manager the last time we won at Griffin Park, back in October 1999, Manny Omoyinmi and Mark Saunders giving us a two goal lead by the half-hour mark, with Lloyd Owusu scoring what turned out to be a consolation goal for the home side, with just over half an hour of the match remaining. We have drawn three and lost one of our four subsequent matches at Brentford.

Gillingham supporters attending next Friday's fixture should note that matchday prices are significantly more expensive than tickets bought in advance. Currently, seat tickets are priced at £15 adults, £10 senior citizens (60+) and full-time students and £1 for under 18s, whilst the equivalent prices on the day of the match will be £23, £17 and £5. Advance terrace tickets are £10 for all supporters, apart from under 18s, which are £1, rising to £22 for adults, £16 senior citizens and students and £5 for under 18s on matchday.

## GILLINGHAM v PORT VALE

Sky Bet League One  
Saturday 1 February 2014  
Kick-Off 3.00pm

Former Gillingham player Micky Adams will be revisiting old haunts when he brings his Port Vale side to MEMS Priestfield in two weeks time.

Earlier this month, Vale's owner Norman Smurfit insisted that Adams was just as committed to the club as ever, despite the fact that his contract expires at the end of this season, stating that, in the

wake of speculation to the contrary, the manager was going nowhere. The owner told BBC Radio Stoke, "When we win he's elated and when we lose he takes it personally very hard. People who aren't committed don't have those traits".

Speaking to Sky Sports following last Saturday's defeat at Brentford, Adams said, "We may have to bring in one or two bodies because we had to rely on youngsters here. I'd have preferred to have come here with a full squad, but regardless of that I didn't feel that we really got going and didn't really do enough going forward. It was a fair result. They have some very good players and it was always going to be difficult coming here, but if you are going to lose a game at least we have had a go".

Port Vale, promoted from League Two with The Gills at the end of last season, are currently ninth in the table. They are the only club in the division yet to draw away from home, their thirteen games on the road having ended in five victories and eight defeats, the wins coming at Carlisle, Tranmere, Crawley, Crewe, and Walsall.

Our last triumph over Vale at Priestfield came at the end of December 2010, when Cody McDonald (2) and Adebayo Akinfenwa were on the scoresheet in a 3-0 victory. Two days later, Adams resigned as Port Vale manager in order to take over at Sheffield United, but he returned for a second spell in charge at Vale Park in May 2011. His short reign at Bramall Lane ended with the sack, after he failed to keep Sheffield United in the Championship.



**LET'S  
KICK RACISM  
OUT OF  
FOOTBALL**

**JOIN KICK IT OUT'S SEASON OF ACTION**

*1993-2013 years of campaigning*

# REPORT IT!



**FACEBOOK/KICKITOUTOFFICIAL**



**@KICKITOUT**



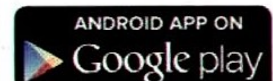
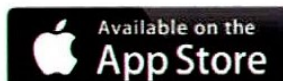
**INFO@KICKITOUT.ORG**



**0800 169 9414**



From August 2013  
you can report using the  
Kick It Out app. **Download it today.**



**KICKITOUT.ORG**



Hi and welcome to our game against Swindon.

## WHO WILL SECURE THE LAST QUARTER-FINAL PLACE

Today sees the last match up of the first round of our Half-time Shoot-out Competition and looking to secure that spot is Davington Primary School and St Margarets at Troy Town CE Primary School. The winner from today will face St Thomas of Canterbury RC Primary School in the last quarter-final in March, while our first quarter-final will take place when the Gills face Port Vale on 1st February. As always please get behind both teams and we wish them the very best of luck.



## FEBRUARY SOCCER SCHOOLS

During the School half-term in February our coaches will be out and about at various venues in Kent running our Soccer Schools.

**ROCHESTER** @ Rochester Math School, ME1 3EL - Mon 17th and Tues 18th Feb.  
**SITTINGBOURNE** @ Westlands School, ME10 1PF - Mon 17th and Tues 18th Feb.  
**SHEERNESS** @ Isle of Sheppey Academy, ME12 3JQ - Thurs 20th and Fri 21st Feb.  
**GILLINGHAM** @ Star Meadow Sports Club, ME7 3AN - Thurs 20th and Fri 21st Feb.  
**CANTERBURY** @ Canterbury High School, CT2 8QA - Thurs 20th and Fri 21st Feb.

**GOALKEEPERS & STRIKERS, GILLINGHAM** @ Beechings Cross Training Ground, ME7 2UD - Weds 19th Feb.  
 All days are just £10 per day 10am to 3pm for 5 to 14 year olds, GK and Striker day for 6 to 16 year olds.

In collaboration with the Kent FA and FA Skills we will also be running a **FREE GIRLS ONLY DAY** in **GILLINGHAM** at Beechings Cross Training Ground on Wednesday 19th Feb, 10:30am to 1:30pm for 5 to 11 year old girls.

Full details of all our Soccer Schools can be found on the official website along with a downloadable application form or if you would prefer please contact us directly, details below.



# Supporting the grassroots



**Football**   
**Foundation**



— ■ FUNDING PARTNERS ■ —

[www.footballfoundation.org.uk](http://www.footballfoundation.org.uk)  
[@FootballFoundtn](https://twitter.com/FootballFoundtn)

*improving facilities • creating opportunities • building communities*

Charity No 1079309 Company No 3876305

## KIDS CUP LOCAL FINAL



We've not got long to wait to find out who will be the local winners of our Football League Kids Cup, the tournament takes place next Thursday, 23rd January at Kicks Soccer Centre in Strood and will see the winner on the day represent Gillingham FC at the Regional Finals in March. At the time of writing these notes we only had very limited spaces left so if your school hasn't already entered make sure you call the Community Trust to check availability.

## DON'T FORGET - KICK IT OUT DESIGN A T-SHIRT COMPETITION



If you would like to see the first team wearing a t-shirt that you designed you need to enter our Design a T-Shirt Competition, which will see the substitutes at our home game against Port Vale wearing the winning designs. Full details of the competition can be found on the official website or please contact the Community Trust.



## GIRLS CUP AREA FINALS

Last week the team from St Simon Stock Catholic School visited the Community Team for a training session in preparation for the Area Finals of this seasons Football League Girls Cup, which took place on Thursday and was hosted by Southend FC. The girls along with their teacher attended the first team training ground for a training session with Community coaches Jack Knighton and Henry Willard, who put the team through their paces as they worked on various techniques and their communication as a group. The girls were then invited back to Priestfield Stadium where they had a tour of the ground before First Team Coach, John Schofield took the girls for a question and answer session in the dugout on a very sunny afternoon. Thank you to the girls for all their hard work and we will let you know how they got on at the Area Finals in our next programme notes.

For more information on any of the activities run by the Community Trust please ring 01634 350125 or email [fitc@priestfield.com](mailto:fitc@priestfield.com)

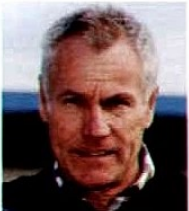
Enjoy the game!

# Tommy T.



# Player Sponsorship 2013/14

**PETER TAYLOR**  
PLAYER SPONSOR



GOOD LUCK AND  
BEST WISHES  
ROSEMARY  
AND JIM

DONNA THE TEAM TALK POSTIE

**JOHN SCHOFIELD**  
PLAYER SPONSOR



HARRY RAY LEE

**1. STUART NELSON**  
PLAYER SPONSOR



TOM &  
BEN UCE

BILLY STONEMAN  
THE THREE HATS MILTON REGIS

**2. MATT FISH**  
PLAYER SPONSOR



BEST WISHES,  
SAMANTHA  
& MARK,  
COOPER  
CONSULTANCY LTD

RUBY STONEMAN

**3. JOE MARTIN**  
PLAYER SPONSOR



IN MEMORY OF  
MICHAEL PHILLIPS  
FROM ALL YOUR  
FRIENDS AT  
GILLS TRAVEL

TAYO ADENRIJI


**4. AMINE LINGANZI**  
PLAYER SPONSOR



**SEWELL**  
WINDOW CLEANING  
COMMERCIAL RESIDENTIAL AUTO ACTIVE  
0753243222  
sewellwindowcleaning@hotmail.co.uk  
www.sewell-window-cleaning.co.uk

ANDY NEWMAN AKA PRAGUE GIT

**5. CALLUM DAVIES**  
PLAYER SPONSOR



A1 GLASS MEDWAY LTD

**6. LEON LEGGE**  
PLAYER SPONSOR



JACK & MAX  
CHANDLER

DAVE LOVERIDGE

**7. CHRIS WHELPDALE**  
PLAYER SPONSOR



GILLINGHAM  
OCCASIONAL  
DISCUSSION  
SOCIETY

BEANEYS TRADITIONAL FAMILY BAKERS

**8. BAYO AKINFENWA**  
PLAYER SPONSOR



KENT GATEWAY  
BLOCK  
MANAGEMENT  
www.kgbm.co.uk

LOUISE BOWLES  
BEN & DAVE McGOVARIN - BEAST MODE ON

**9. DANNY KEDWELL**  
PLAYER SPONSOR



REASON & CO

THE THREE HATS MILTON REGIS  
GAS CONTRACT SERVICES


**10. CODY McDONALD**  
PLAYER SPONSOR



KEJAN  
ENGINEERING

GL: Stew, Nick, Daz, Chris, BigG, LiIG, Jules & Lee  
PETER BELCHER

**11. MYLES WESTON**  
PLAYER SPONSOR



ALL THE BEST  
FROM  
MARK & ALL  
IN BOX 15

MARK FAWCETT-JONES

**12. STEVEN GREGORY**  
PLAYER SPONSOR



**P.F.E.**  
01634 968800  
**Site Services Ltd**  
SPECIALISTS IN STEELWORK, STEEL & CONCRETEWORK MAINTENANCE

THE SAMARITANS

**13. THE RAINHAM END**



Join our winning team and sponsor your favourite player or a member of the Gills Coaching Staff. Prices start from as little as £50 for the season so call our Sales Team today on 01634 350350



**14. CHARLIE ALLEN**

PLAYER SPONSOR



Kevin & Thomas Carney sponsoring Charlie in memory of John Carney R.I.P

DONNA NUTT  
DAN DANIELLE & LENNON

**15. BRADLEY DACK**

PLAYER SPONSOR



**mexmast**

DAN DANIELLE & LENNON

**16. ANTONIO GERMAN**

PLAYER SPONSOR



**Nationwide Ventilation**  
01634 811116

ICRIS INSURANCE BROKERS STROOD

**18. CHARLIE LEE**

PLAYER SPONSOR



**26. ADAM BARRETT**

PLAYER SPONSOR



ALL THE BEST  
JAN & DAVE  
KCS GROUP

PAUL JOHNSTONE & NICOLA TUER

**31. JAKE HESSENTHALER**

PLAYER SPONSOR



**JAMES RUSSELL**

PLAYER SPONSOR



RAIL TRAINING INTERNATIONAL

RAIL TRAINING INTERNATIONAL

**TOMMY T**

PLAYER SPONSOR



**MALCOLM STEADMAN**

PLAYER SPONSOR



JACK & SHANA

**GILLINGHAM FOOTBALL CLUB - SEASON 2013/14**



# LEAGUE ONE REVIEW

BY ANDREW FORD

The top three clubs all took advantage of playing at home last Saturday, with each registering a victory and keeping a clean sheet.

The last time leaders Brentford were beaten in the league was on 12 October, their 1-2 defeat that day at Stevenage, who are currently bottom of the table, leaving The Bees in eleventh position. An unbeaten run of fourteen matches since then, including thirteen victories, has seen the Londoners climb to the top of the table, the change of manager during that period having had no detrimental effect on results, the club having won all six of their League One fixtures since Sporting Director Mark Warburton succeeded Uwe Rosler, who left to take over at Championship side Wigan Athletic in early December. Brentford have picked up the Manager of the Month award for League One for the past two months, with different bosses, Rosler triumphing in November, Warburton in December. The Player of the Month award also went to The Bees in December, won by midfielder Sam Saunders.

Both the current top two are London clubs, with Leyton Orient, not out of the automatic promotion places all season, in second position. Having won 5-1 at Carlisle on the opening day, Russell Slade's men registered another victory by a four goal margin against the Cumbrian

side when the two clubs met in the return at Brisbane Road last weekend. The result meant that The O's, who have the best goal difference in the division of plus thirty-one, have lost only two out of their last twelve league fixtures. Orient had four players making their first league appearances for the club in the Carlisle match, with two of them, Jamie Ness and Shaquile Coulthirst, getting on the scoresheet. Both are currently on one month loan deals, with Ness on Norwich's books and Coulthirst at Tottenham, for whom he made his first senior appearance, as a substitute, in a Europa League tie against Anzhi Makhachkala last month.

## Speculation

Third-placed Wolves extended their lead over Preston North End in fourth last weekend to five points, when they beat the Deepdale club 2-0 in front of 20,434 at Molineux, to register only their second victory in eight league games. Wanderers' goalkeeper Wayne Hennessey, subject of recent transfer speculation, was on the bench for the hosts, having apologised for refusing to play in the 0-1 defeat here eight days earlier, saying, "With hindsight I'd have done things differently". It was only Preston's second defeat in their last fourteen games, the other having been a

0-3 loss at Brentford on the last Saturday before Christmas.

At the other end of the table, Stevenage are currently bottom, although they cut the gap between themselves and Bristol City, who are immediately above them, from four points to one, as a result of their 2-0 home victory on Tuesday night over our visitors this afternoon, Swindon. It was their first win in eight games and followed a run of three successive league defeats in which they scored once and conceded nine times. Manager Graham Westley said after the midweek match, "I thought we played well. We're bottom of the league and everyone had written us off but we're not about lying down".

Bristol City, twenty-third in the division, are striving to avoid a second successive relegation. The Robins, who took thirteen games before registering a league win this season, have been permanent residents in the drop zone since late November, but they are currently unbeaten in four, courtesy of two wins and a couple of draws. Their goal difference is only minus three, nine better than Gillingham's. City have made losses in excess of £10M in each of the last four years, but club owner Steve Lansdown recently reduced their debt by £35M, down to £23M, by restructuring part of his investment

from loans to shares. A club statement confirmed that future funds required by The Robins would be introduced as equity, rather than amassed as additional debt, with chief executive Doug Harman saying, "The club continues to make significant progress in reducing its annual losses and reshaping the way in which it does business, while seeking to ensure it remains competitive on the pitch. This is a difficult balancing act, but it is crucial to the long term sustainability of the club".

Crewe Alexandra, who have conceded the most goals, fifty-one, and have the worst goal difference, minus twenty-seven, in the division, are immediately above Bristol City. The Alex have let in three goals or more on their travels on five occasions, including 0-5 defeats at both Swindon and Brentford. The club slipped to the bottom of the table on Boxing Day, after losing at Wolves, but have subsequently won two out of three league games.

#### Improve

Notts County occupy the last of the relegation places but, like their fellow drop zone rivals Bristol City and Crewe, have seen results improve of late. The Magpies lost fourteen of their first nineteen games and have been in the bottom four for most of the season, with nineteenth being their highest league position to date. However, Shaun Derry's men have won four out of their last seven fixtures, including both their last two matches, 3-0 against Bradford and last Saturday's 2-1 triumph over Sheffield United, a result that left the Nottingham club just one point behind Nigel Clough's Blades.

Port Vale are our next visitors, in a fortnight's time, and, just over a week ago, their chairman Norman Smurthwaite appeared alone on stage before two hundred of the club's followers at a supporters' club meeting held at Vale Park, spending three hours answering fans' questions. Details of the evening were reported by the local Sentinel newspaper and the chairman was extremely forthright in his responses. When asked why he thought Vale were not ready for the second tier, Smurthwaite stated that he believed that it would cost a lot of money to reach the Championship and said, "If you want me to spend another £250,000 to get us promoted, don't hold

your breath. The simple answer is we can't afford to go into the Championship. We need to spend at least £250,000 in the next six months to bring in three or four key players of the calibre to get us way above the line." He advised that the club was losing money as the budget for this season, set by the previous chairman, had been too optimistic, and that he'd put £1M in since last July, commenting "I am the bank. If I drop dead you are shafted because my wife won't be coming along with a chequebook".

He also defended his record in obtaining sponsorship, saying, "For the first time in a long time we have four stand sponsors paying me real money, not giving me a bucket load of crap and some freebies. This year we got £87,500 in for four stand sponsors". Smurthwaite also acknowledged that fans' complaints about the club's new ticketing system, particularly with regard to online bookings, were justified, admitting, "It's costing nearly £7,000 a month. That's another brainwave which unfortunately will be with us for four-and-a-half years now."

When asked about an unpaid Police bill relating to Wolves' visit at the start of the season, which the club refuses to pay as they are unhappy with the charge and the way the game was policed, the chairman said, "I owe the police £26,000. I have paid the other ones. Originally there were three

bills outstanding which added up to £33,000. As a matter of principle that isn't going to go and I am not going to pay. They could put this club out of business if they want to. I am not backing down on it, because it is wrong. If you think I have lost the plot, please tell me now, I will go back to the sunshine".

Port Vale secured some additional revenue on Tuesday evening, their 3-2 FA Cup third round replay win at League Two Plymouth Argyle earning them prize money of £67,500. They were one of five League One teams in midweek Cup replay action. Preston also went through to the fourth round, courtesy of substitute Joe Garner's first-ever hat-trick in a 3-2 home triumph over Ipswich. However, our other three clubs all went out of the competition. MK Dons led Cup holders Wigan 1-0 with eleven minutes to go, but ended up losing 1-3 after extra time. Peterborough were beaten at home by Skryll Premier side Kidderminster, whilst Bristol City went down 0-2 at Watford. League One representation in round four will consist of five teams, with all of them facing higher league opposition. There will be Premier League visitors for Stevenage, hosting Everton, and Sheffield United, who take on Fulham. Port Vale will welcome Brighton to Vale Park whilst there are away ties for Coventry at Arsenal, and Preston, who travel to Nottingham Forest.



Port Vale Chairman Norman Smurthwaite



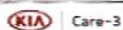


kia.co.uk

## The new Picanto 5-door 'VR7'

FAB  
LITTLE  
CAR!

from a fab  
**£8,995<sup>^</sup>**



**£99 3-YEAR SERVICING<sup>1</sup>**

**4.9%\* APR REPRESENTATIVE**  
No minimum deposit

To check out all our offers and to see what our customers are saying, visit us at [kia.co.uk](http://kia.co.uk)



The Power to Surprise

### Hidsons Kia

5 High Street, Rainham, Kent ME8 7JB **01634 235191**

Oakwood Ind Est, Thames Way, Northfleet, Kent DA11 9DT **01474 546470**

**8.9** Read 2,299 reviews  
out of 10 **reevoo** 04/12/13

Now with over  
**10,000**  
reviews across the Kia range.

**reevoo**  
Read the reviews at  
[kia.co.uk/reviews](http://kia.co.uk/reviews)

Fuel consumption figures in mpg (l/100km) for the Kia Picanto range are: Urban 39.2 (7.2) – 53.3 (5.3), Extra Urban 60.1 (4.7) – 78.5 (3.6), Combined 50.4 (5.6) – 67.3 (4.2). CO<sub>2</sub> emissions are 130 – 99 g/km.

MPS figures are official EU test figures for comparative purposes and may not reflect real driving results. 7 year / 100,000 mile manufacturer's warranty. For terms and exclusions visit [kia.co.uk](http://kia.co.uk) or see your local dealer. Price, Reevoo score and number of reviews correct at time of going to press and specification is subject to change without notice. Review quoted relates to the Kia Picanto range. \*Model shown is a Picanto 5-door 'VR7' 1.0 Ecohatch 5-speed manual @ £8,995 including customer saving of £750 and excluding optional metallic paint at £455. Retail customers only. Customer savings vary by model derivative. Ask your dealer for full details. †3 years' servicing (Kia Care-3) for £99 offer is only valid on applicable 'VR7' models. Log onto [kia.co.uk/care3](http://kia.co.uk/care3) for full details. Subject to availability on vehicles registered before 31 March 2014. Participating dealers only. \*4.9% APR available on Kia Conditional Sale on Picanto models. No minimum deposit required. Maximum term of 36 months. Offer not available in conjunction with any other offer. Finance subject to status. Terms and conditions apply. 18% or over guarantees / indemnities may be required. Kia Motors Finance RH1 1SR. We can introduce you to a limited number of carefully selected finance providers. We may receive a commission from them for the introduction.



# hometicketnews

## FORTHCOMING HOME MATCHES



Saturday 1 February, Kick-Off 3.00pm  
Sky Bet League 1  
**v PORT VALE**  
Tickets now on sale



Saturday 15 February, Kick-Off 3.00pm  
Sky Bet League 1  
**v SHEFFIELD UNITED**  
Tickets on sale Monday 20 January



Saturday 8 March, Kick-Off 3.00pm  
Sky Bet League 1  
**v CRAWLEY TOWN**  
Tickets on sale Monday 10 February

## HOW TO PURCHASE TICKETS

1. By using the online service at:  
<http://www.gillinghamfc.talent-sport.co.uk/>  
Tickets can be booked up to three days before the fixture for which they are being booked. Online ticket bookings will incur an additional charge of £1 per ticket but will be sent to the recipient free of charge.
2. By telephoning Gillingham Football Club on (01634) 300000, choosing option 1. Telephone ticket bookings will incur a booking fee of £1 (50p for season ticket holders).
3. By visiting the club's ticket office in Redfern Avenue. Opening hours are; Monday to Friday 9am - 5pm, Matchday Saturdays 9am until 20 minutes after kick-off. Non-matchday Saturdays 9am - 1pm

### GORDON ROAD STAND



		A	B	C	D	E	F	G	H																																																																																																																
		BRONZE	SILVER	SILVER	GOLD	GOLD	SILVER	BRONZE	BRONZE																																																																																																																
RAINHAM END STAND	7	<table border="1" style="width: 100%; border-collapse: collapse;"> <thead> <tr> <th colspan="4">PRE-MATCH DAY TICKET PRICES</th> <th colspan="4">MATCH DAY TICKET PRICES</th> </tr> </thead> <tbody> <tr> <td colspan="8" style="text-align: center;">Rainham End, Medway Stand &amp; Gordon Road</td> </tr> <tr> <td colspan="8" style="text-align: center;">Bronze</td> </tr> <tr> <td>Adult</td><td>£20</td><td>Senior</td><td>£17</td> <td>Adult</td><td>£24</td><td>Senior</td><td>£20</td> </tr> <tr> <td>Under-18</td><td>£10</td><td>Under-12</td><td>£7</td> <td>Under-18</td><td>£12</td><td>Under-12</td><td>£8</td> </tr> <tr> <td colspan="8" style="text-align: center;">Medway Stand Lower Blocks DEF</td> </tr> <tr> <td colspan="8" style="text-align: center;">Adults (no concessions)</td> </tr> <tr> <td colspan="4" style="text-align: center;">£24</td> <td colspan="4" style="text-align: center;">£28</td> </tr> <tr> <td colspan="8" style="text-align: center;">Gordon Road Blocks DE</td> </tr> <tr> <td>Adult</td><td>£24</td><td>Senior</td><td>£18</td> <td>Adult</td><td>£28</td><td>Senior</td><td>£21</td> </tr> <tr> <td>Under-18</td><td>£10</td><td>Under-12</td><td>£7</td> <td>Under-18</td><td>£12</td><td>Under-12</td><td>£8</td> </tr> <tr> <td colspan="8" style="text-align: center;">Brian Moore Stand</td> </tr> <tr> <td>Adult</td><td>£15</td><td>Senior</td><td>£15</td> <td>Adult</td><td>£20</td><td>Senior</td><td>£20</td> </tr> <tr> <td>Under-18</td><td>£10</td><td>Under-12</td><td>£5</td> <td>Under-18</td><td>£12</td><td>Under-12</td><td>£7</td> </tr> </tbody> </table>						PRE-MATCH DAY TICKET PRICES				MATCH DAY TICKET PRICES				Rainham End, Medway Stand & Gordon Road								Bronze								Adult	£20	Senior	£17	Adult	£24	Senior	£20	Under-18	£10	Under-12	£7	Under-18	£12	Under-12	£8	Medway Stand Lower Blocks DEF								Adults (no concessions)								£24				£28				Gordon Road Blocks DE								Adult	£24	Senior	£18	Adult	£28	Senior	£21	Under-18	£10	Under-12	£7	Under-18	£12	Under-12	£8	Brian Moore Stand								Adult	£15	Senior	£15	Adult	£20	Senior	£20	Under-18	£10	Under-12	£5	Under-18	£12	Under-12	£7	1	BRIAN MOORE STAND
	PRE-MATCH DAY TICKET PRICES							MATCH DAY TICKET PRICES																																																																																																																	
	Rainham End, Medway Stand & Gordon Road																																																																																																																								
	Bronze																																																																																																																								
	Adult							£20	Senior	£17	Adult	£24	Senior	£20																																																																																																											
	Under-18							£10	Under-12	£7	Under-18	£12	Under-12	£8																																																																																																											
	Medway Stand Lower Blocks DEF																																																																																																																								
	Adults (no concessions)																																																																																																																								
	£24							£28																																																																																																																	
	Gordon Road Blocks DE																																																																																																																								
Adult	£24	Senior	£18	Adult	£28	Senior	£21																																																																																																																		
Under-18	£10	Under-12	£7	Under-18	£12	Under-12	£8																																																																																																																		
Brian Moore Stand																																																																																																																									
Adult	£15	Senior	£15	Adult	£20	Senior	£20																																																																																																																		
Under-18	£10	Under-12	£5	Under-18	£12	Under-12	£7																																																																																																																		
6	2																																																																																																																								
5	3																																																																																																																								
4	4																																																																																																																								
3	5																																																																																																																								
2	6																																																																																																																								
1	7																																																																																																																								
		J	H	G	F	E	D	C	B	A	← LOWER TIER																																																																																																														
		J	H	G	F	E	D	C	B	A	← UPPER TIER																																																																																																														
		<small>SPONSORS AND SPECIAL PACKAGES      EXECUTIVE CLUB      DIRECTOR'S BOX      EXECUTIVE SUITE</small>																																																																																																																							
		<b>MEDWAY STAND</b>																																																																																																																							

# Building a winning culture

more people  
more active  
more often



- host to Gillingham FC Centre of Excellence, and Development Centre
- sports scholarship scheme supporting nearly 70 athletes
- home to over 50 sports clubs
- continual investment in infrastructure, staff and services

  UniKentSports

[kent.ac.uk/sports](http://kent.ac.uk/sports)

Kent Sport University of Kent, Canterbury, Kent CT2 7NL  
Tel: 01227 827430 Email: [sportsenquiries@kent.ac.uk](mailto:sportsenquiries@kent.ac.uk)

University of  
**Kent**

**SPORT**



# awayticketnews



## BRENTFORD v GILLINGHAM

Sky Bet League 1  
Friday 24 January 2014  
Kick-Off 7.45pm

Gills supporters have been given an initial allocation of 300 unreserved seating tickets and 300 terrace tickets situated in the Brook Road Stand behind the goal.

Tickets are currently on general sale and will also be available on the day of the game CASH ONLY from the turnstiles, but there is a significant increase in price. Please also note that there is no collection point for away supporters and there are no card facilities available on the day of the game.

### Advance Prices:

#### Seats:

Adult £15 Senior Citizen (60+)/Student (full-time) £10  
Junior (Under 18) £1

### Terrace:

Adult/Senior Citizen (60+)/Student (full-time) £10  
Junior (Under 18) £1

### Matchday Prices:

#### Seats:

Adult £23 Senior Citizen (60+) £17 Junior (Under 18) £5

### Terrace:

Adult £22 Senior Citizen (60+) £16 Junior (Under 18) £5

Wheelchair supporters should contact Brentford direct on 0845 3456 442

### Club Class Travel Details:

Sittingbourne Railway Station	3.15pm
Rainham outside The Cricketers	3.30pm
MEMS Priestfield Stadium	4.00pm
Strood, Coach & Horses	4.15pm
Tollgate	4.30pm

Prices: Adults £16 Under-16's £13

**CLUB CLASS TRAVEL** is Gillingham Football Club's official away travel scheme, offering Gillingham supporters travel to all our away matches on the superb Kings Ferry Coaches. Please note that alcohol is not permitted on the coaches.



### HOW TO BOOK COACH TRAVEL

#### 1. By ringing

Dave or Julie Taylor on (01634) 375919  
Trevor or Julie Loveridge on (01634) 301899 (evenings before 10pm)  
Gillingham Football Club on (01634) 300000 choosing option 1

If you get an answerphone message, please leave your name and number and your call will be returned.

#### 2. By visiting the ticket office in Redfern Avenue.

Opening hours are 9am to 5pm Monday to Friday, 9am to 20 minutes after kick-off matchday Saturdays and 9am to 1pm non-matchday Saturdays.

# 2013-14 STAT PACK



## LEAGUE ONE TOP FIVES

### GOALS

1	CLARKE	15
2	BAMFORD	14
3	LOWE	14
4	WELLS	14
5	WILSON	14

### ASSISTS

1	COX	10
2	PRINGLE	9
3	BAKER	7
4	EMMANUEL-TH...	7
5	SAKO	7

### SHOTS ON TARGET

1	BAMFORD	40
2	WILSON	39
3	CLARKE	36
4	DONALDSON	35
5	WELLS	34

### MINUTES PER GOAL

1	COULTHIRST	6
2	BOWDITCH	20
3	GRAY	45
4	FOLEY	53
5	STOCKLEY	54

### % OF GOALS INVOLVED IN

1	EMMANUEL-TH...	56
2	LOWE	52
3	WELLS	44
4	BAMFORD	41
5	BALDOCK	38

### MINUTES PER CHANCE CREATED

1	MIKE WEST	24
2	HALL	51
3	MCFADZEAN	63
4	MCLAUGHLIN	63
5	WESTLAKE	72

### FOULS

1	HANSON	66
2	DAVIES	47
3	DONALDSON	46
4	FRECKLINGTON	46
5	GRIFFITH	45

### MINUTES PER GOAL CONCEDED

1	BONHAM	16
2	FLEMING	23
3	HOWARD	30
4	MCLOUGHLIN	35
5	MARTIN	37

## LEAGUE ONE SPOTLIGHT

Brentford have taken 31 of 33 points available since the start of November, at least 10 more than any other League One side.

## LEAGUE ONE SPOTLIGHT

Coventry's games have seen a total of 98 goals netted this season, 15 more than games involving any other side in the top four tiers.

\*Data does not include games played on January 14th





# table



Team	P	W	D	L	F	A	GD	PTS
1 Brentford	25	17	4	4	44	23	21	55
2 Leyton Orient	25	16	6	3	54	23	31	54
3 Wolves	26	15	7	4	41	19	22	52
4 Preston	25	13	8	4	35	26	9	47
5 Rotherham	25	11	8	6	42	34	8	41
6 Walsall	26	11	8	7	29	23	6	41
7 Peterborough	25	12	3	10	37	32	5	39
<b>8 Swindon</b>	<b>25</b>	<b>11</b>	<b>4</b>	<b>10</b>	<b>42</b>	<b>34</b>	<b>8</b>	<b>37</b>
9 Port Vale	25	11	3	11	36	39	-3	36
10 MK Dons	24	10	5	9	39	34	5	35
11 Coventry	25	12	7	6	54	44	10	33
12 Bradford	25	7	11	7	36	30	6	32
13 Colchester	25	7	10	8	31	32	-1	31
14 Crawley	24	7	9	8	27	32	-5	30
<b>15 Gillingham</b>	<b>26</b>	<b>8</b>	<b>5</b>	<b>13</b>	<b>33</b>	<b>45</b>	<b>-12</b>	<b>29</b>
16 Oldham	25	7	6	12	27	33	-6	27
17 Carlisle	25	7	6	12	26	43	-17	27
18 Shrewsbury	26	6	8	12	26	32	-6	26
19 Sheff Utd	25	6	7	12	24	33	-9	25
20 Tranmere	25	6	7	12	29	45	-16	25
21 Notts County	26	7	3	16	32	39	-7	24
22 Crewe	25	6	6	13	24	51	-27	24
23 Bristol City	24	4	11	9	34	37	-3	23
24 Stevenage	25	6	4	15	24	43	-19	22

# fixtures

- Bristol City v MK Dons
- Carlisle v Colchester
- Crawley v Wolves
- Crewe v Leyton Orient
- Peterborough v Tranmere
- Port Vale v Oldham
- Preston v Coventry
- Sheff Utd v Bradford
- Shrewsbury v Rotherham
- Stevenage v Notts County
- Walsall v Brentford



All fixtures are 3.00pm KOs unless otherwise stated.

# rollcall



PLAYER	D.O.B.	LEAGUE		CUPS		TOTAL		CARDS		GFC CAREER	
		APPS	GOALS	APPS	GOALS	APPS	GOALS			APPS	GOALS
Adebayo Akinfenwa	10/05/1982	7(9)	5	2(1)		9(10)	5	2		50(15)	16
Charlie Allen	24/03/1992	2(3)		(1)		2(4)		2		28(13)	2
Adam Barrett	29/11/1979	26	1	4		30	1	3		76	2
Adam Birchall	02/12/1984									8(11)	1
Stephen Butcher	19/11/1994	(1)		1		1(1)				1(1)	
Bradley Dack	31/12/1993	6(8)	1	3(1)	2	9(9)	3	4		19(19)	5
Donervon Daniels	24/11/1993	3	1			3	1			3	1
Callum Davies	08/02/1993	3(2)		2		5(2)				21(8)	
Craig Fagan	11/12/1982	5(2)				5(2)				5(2)	
Matt Fish	05/01/1989	1				1				70(8)	4
Antonio German	26/12/1991	(8)		3		3(8)				7(11)	1
Harry Grant	31/12/1993									1	
Steven Gregory	19/07/1987	17(3)		3		20(3)		3		32(7)	
Michael Harriman	23/10/1992	22		3		25		1		25	
Jake Hessenthaler	20/04/1994	7(1)				7(1)				7(1)	
Kane Haysman	29/12/1994									(1)	
Elliott Hewitt	30/05/1994	3				3		2		3	
Danny Hollands	06/11/1985	16(1)	1	1		17(1)	1	1		17(1)	1
George Howard	28/01/1994										
Danny Kedwell	03/08/1983	23(2)	10	1(2)		24(4)	10	3		95(21)	40
Charlie Lee	05/01/1987	18(2)		2		20(2)		5	1	81(19)	9
Leon Legge	01/07/1985	20	1	3		23	1	4	1	45	3
Amine Linganzi	16/11/1989	6(2)				6(2)				6(2)	
Joe Martin	29/11/1989	26	2	4		30	2	3		119(8)	6
Cody McDonald	30/05/1986	16(7)	9	2(2)		18(9)	9	1		67(10)	38
Devante McKain	26/06/1994	(1)				(1)				(2)	
John Mousinho	30/04/1986	4	1	1(1)		5(1)	1			5(1)	1
Sam Muggleton	17/11/1995	(1)				(1)				1(1)	
Stuart Nelson	17/09/1981	26		4		30		3		78	
Nathan Nyafi	24/12/1993									(1)	1
Mahlon Romeo	19/09/1995									1	
Connor Smith	18/02/1993	(1)				(1)				(1)	
Myles Weston	12/03/1988	13(10)		2(2)		15(12)		1		36(30)	8
Chris Whelpdale	27/01/1987	17(2)	1	3(1)		20(3)	1	1		101(15)	23

# fixtures and results

Key: (1) Goalscorer in brackets / \* Sent off

	Referee	F	A	Att	Pos						
COLCHESTER UNITED	Sat Aug 3 Hill	0	1	6,792	20	Nelson	Fish	Legge	Barrett	Martin	Lee
BRISTOL CITY (Capital One Cup 1)	Tue Aug 6 Deadman	0	2	2,585	-	Nelson	Harriman	Legge	Barrett	Martin	Dack
Wolverhampton Wanderers	Sat Aug 10 Atwell	0	4	19,102	22	Nelson	Harriman	Legge	Barrett	Martin	Weston
BRENTFORD	Sat Aug 17 Ward	1	1	6,225	21	Nelson	Harriman	Legge	Barrett	Martin	Weston
Swindon Town	Sat Aug 24 Williamson	2	2	7,520	20	Nelson	Harriman	Legge	Barrett	Martin	Weston
BRISTOL CITY	Sat Aug 31 Russell	1	1	5,616	21	Nelson	Harriman	Legge	Barrett	Martin	Weston
LEYTON ORIENT (JPT Round 1)	Tue Sep 3 Bull	1	3	1,630	-	Nelson	Harriman	Legge	Barrett	Martin	Dack 1
Crawley Town	Sat Sep 7 Rushton	2	3	3,984	21	Nelson	Lee*	Legge 1	Barrett	Martin	Dack
Coventry City	Sun Sep 15 Kettle	1	2	2,046	23	Nelson	Harriman	Legge	Barrett	Martin	Weston
BRADFORD CITY	Sat Sep 21 Collins	0	1	4,965	24	Nelson	Harriman	Legge	Barrett	Martin	Weston
Crewe Alexandra	Sat Sep 28 Langford	3	0	4,254	17	Nelson	Harriman	Davies	Barrett 1	Martin 1	Lee
MILTON KEYNES DONS	Sat Oct 5 Linington	3	2	5,410	16	Nelson	Harriman	Davies	Barrett	Martin	Lee
Shrewsbury Town	Sat Oct 12 Salisbury	0	2	5,129	17	Nelson	Allen	Davies	Barrett	Martin	Lee
PRESTON NORTH END	Sat Oct 19 Horwood	1	2	7,054	19	Nelson	Harriman	Legge	Barrett	Martin	Lee
NOTTS. COUNTY	Tue Oct 22 Phillips	2	1	5,161	17	Nelson	Harriman	Legge	Barrett	Martin	Lee
Port Vale	Sat Oct 26 Bond	1	2	5,690	19	Nelson	Harriman	Legge	Barrett	Martin	Lee
CARLISLE UNITED	Sat Nov 2 Breakspear	1	0	5,697	17	Nelson	Harriman	Legge	Barrett	Martin	Lee
BRACKLEY TOWN (FA Cup 1)	Sat Nov 9 Collins	1	1	3,004	-	Nelson	Harriman	Davies	Barrett	Martin	Weston
Sheffield United	Sat Nov 16 Eltringham	2	1	16,560	14	Nelson	Hewitt	Legge	Barrett	Martin	Mousinho
Breckley Town (FA Cup 1 R)	Tue Nov 19 Linington	0	1	1,772	-	Nelson	Butcher	Legge	Barrett	Martin	Weston
OLDHAM ATHLETIC	Sat Nov 23 Scott	0	1	6,025	16	Nelson	Hewitt	Legge	Barrett	Martin	Harriman
STEVENAGE	Tue Nov 26 Malone	3	2	4,591	16	Nelson	Harriman	Daniels 1	Barrett	Martin	Weston
Rotherham United	Sat Nov 30 Woolmer	1	4	7,152	17	Nelson	Harriman	Daniels	Barrett	Martin	Lee
Notts. County	Sat Dec 7 Simpson	1	3	3,607	17	Nelson	Harriman	Daniels	Barrett	Martin	Lee
PETERBOROUGH UNITED	Sat Dec 14 Robinson	2	2	6,949	17	Nelson	Harriman	Legge	Barrett	Martin 1	Whelpdale
Tranmere Rovers	Fri Dec 20 Lewis	2	1	6,251	14	Nelson	Harriman	Legge	Barrett	Martin	Weston
LEYTON ORIENT	Thu Dec 26 Graham	1	2	8,613	15	Nelson	Harriman	Legge	Barrett	Martin	Lee
WALSALL	Sun Dec 29 Kettle	2	2	5,394	16	Nelson	Harriman	Legge	Barrett	Martin	Whelpdale
WOLVERHAMPTON WANDERERS	Fri Jan 3 Brown	1	0	7,758	14	Nelson	Harriman	Legge	Barrett	Martin	Lee
Colchester United	Sat Jan 11 Drysdale	0	3	3,819	15	Nelson	Harriman	Legge	Barrett	Martin	Dack
SWINDON TOWN	Sat Jan 18										
Brentford	Fri Jan 24										
PORT VALE	Sat Feb 1										
Stevenage	Tue Feb 4										
Carlisle United	Sat Feb 8										
SHEFFIELD UNITED	Sat Feb 15										
Oldham Athletic	Sat Feb 22										
Bristol City	Sat Mar 1										
CRAWLEY TOWN	Sat Mar 8										
COVENTRY CITY	Tue Mar 11										
Bradford City	Sat Mar 15										
CREWE ALEXANDRA	Sat Mar 22										
Milton Keynes Dons	Tue Mar 25										
Peterborough United	Sat Mar 29										
ROTHERHAM UNITED	Sat Apr 5										
Leyton Orient	Sat Apr 12										
TRANMERE ROVERS	Fri Apr 18										
Walsall	Mon Apr 21										
Preston North End	Sat Apr 26										
SHREWSBURY TOWN	Sat May 3										





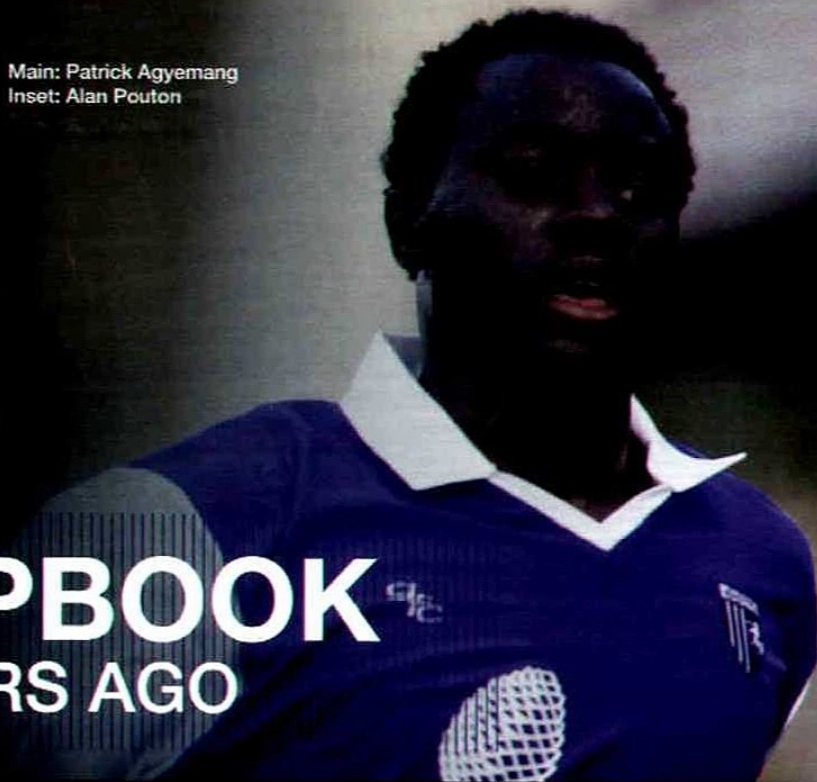
SUBSTITUTES - Subs that came on are colour coded: Red, Blue and Green

Gregory	Linganzi	Whelpdale	Kedwell	McDonald	Butcher	Weston	Akinfenwa	Howard	Davies	Dack	German
Gregory	Davies	Whelpdale	Akinfenwa	German	Kedwell	McDonald	Weston	Howard	Lee	Hare	Butcher
Gregory	Linganzi	Lee	Kedwell	McDonald	Dack	Whelpdale	German	Howard	Akinfenwa	Allen	Davies
Gregory	Lee	Whelpdale	Kedwell	Akinfenwa 1	McDonald	Allen	Dack	Howard	Davies	Grant	German
Gregory	Lee	Whelpdale	Kedwell 1	Akinfenwa	Dack	McDonald 1	German	Howard	Davies	Allen	Grant
Gregory	Lee	Whelpdale	Kedwell	Akinfenwa 1	McDonald	Hollands	Allen	Howard	Davies	Dack	German
Gregory	Hollands	Whelpdale	German	McDonald	Allen	Weston	Kedwell	Howard	Davies		
Gregory	Hollands	Whelpdale	Kedwell 1	Akinfenwa	Weston	Linganzi	McKain	Howard	Allen	German	Butcher
Allen	Hollands	Linganzi	Kedwell	McDonald 1	Gregory	Akinfenwa	Muggleton	Howard	Davies	Dack	Hessenthaler
Lee	Hollands	Linganzi	Akinfenwa	McDonald	Kedwell	Whelpdale	German	Howard	Allen	Dack	Davies
Gregory	Hollands	Whelpdale	Kedwell	McDonald 1	Weston	Allen	Dack	Howard	Akinfenwa	Legge	Linganzi
Gregory	Hollands 1	Whelpdale	Kedwell 2	McDonald	Weston	Allen	Dack	Howard	Akinfenwa	Legge	Linganzi
Gregory	Hollands	Whelpdale	Kedwell	McDonald	Weston	German	Akinfenwa	Howard	Dack	Legge	Linganzi
Gregory	Hollands	Whelpdale	Kedwell 1	McDonald	Weston	German	Akinfenwa	Howard	Davies	Dack	Linganzi
Gregory	Hollands	Whelpdale 1	Kedwell 1	Weston	Linganzi	McDonald	Akinfenwa	Howard	Davies	Dack	German
Linganzi	Hollands	Whelpdale	Kedwell 1	Weston	German	McDonald	Dack	Howard	Akinfenwa	Gregory	Davies
Linganzi	Hollands	Whelpdale	Kedwell 1	Weston	Dack	McDonald	Gregory	Howard	Akinfenwa	German	Davies
Gregory	Lee	Whelpdale	Kedwell	McDonald	Dack 1	Akinfenwa	Mousinho	Howard	German	Carter	Hessenthaler
Gregory	Hollands	Whelpdale	Kedwell 1	Fagan	Dack	McDonald 1	Weston	Howard	Akinfenwa	Davies	Hessenthaler
Lee	Dack	Mousinho	German	Akinfenwa	Whelpdale	McDonald	Davies	Howard	McKain	Carter	Hessenthaler
Mousinho	Hollands	Whelpdale	Kedwell	McDonald	Weston	Fagan	Dack	Howard	Akinfenwa	Davies	Hessenthaler
Mousinho 1	Hollands	Hewitt	Kedwell 1	Fagan	McDonald	Whelpdale	Dack	Howard	Akinfenwa	Davies	Hessenthaler
Mousinho	Hollands	Whelpdale	Kedwell	McDonald 1	Weston	Akinfenwa	Hessenthaler	Howard	Dack	Carter	Davies
Hessenthaler	Hollands	Dack 1	Kedwell	Weston	Akinfenwa	McDonald	Whelpdale	Howard	Linganzi	Legge	Davies
Hessenthaler	Hollands	Dack	Kedwell	McDonald 1	Gregory	Weston	Davies	Howard	Akinfenwa	Daniels	German
Hessenthaler	Gregory	Dack	Akinfenwa 2	McDonald	German	Lee	Fagan	Howard	Davies	Daniels	Hare
Hessenthaler	Gregory	Dack	Akinfenwa 1	McDonald	Fagan	German	Kedwell	Howard	Davies	Daniels	Allen
Hessenthaler	Gregory	Fagan	Kedwell	McDonald 2	Akinfenwa	Davies	Lee	Howard	Dack	Daniels	German
Hessenthaler	Gregory	Fagan	Kedwell	McDonald 1	Dack	Akinfenwa	Marriott	Howard	Davies	Daniels	Linganzi
Hessenthaler	Gregory	Fagan	Kedwell	McDonald	Smith	Akinfenwa	Weston	Howard	Davies	Marriott	Linganzi





Main: Patrick Agyemang  
Inset: Alan Pouton



# SCRAPBOOK OF 10 YEARS AGO

## ANDY BRADLEY REFLECTS ON GILLINGHAM'S UPS AND DOWNS DURING THE 2003/04 CAMPAIGN

By the time Gillingham travelled to play Derby County in the middle of January, there was a different look to the club's playing personnel, with two new men on board and one departing.

Player/manager Andy Hessenthaler took advantage of Wimbledon's fire sale to secure fleet-footed striker Patrick Agyemang (23) for an undisclosed fee of around £150,000.

A few days later and he brought in 26-year-old midfield enforcer Alan Pouton, from Grimsby, initially on loan.

These deals were partly funded by Paul Shaw's £75,000 transfer to Sheffield United.

"Patrick is only a young lad but he has loads of skill, speed and potential," explained Hussy. "Many of you will recall the pain he inflicted by scoring the winning goal for Wimbledon, against us, only a couple of months ago.

"Alan is another good footballer with loads of experience and youth still on his side.

"He also brings a certain disciplined aggression and his arrival will create good competition for the midfield places."

However, only one of the two - Agyemang - played at Derby and it wasn't the best of starts. Mainly

because the Gills lost 2-1 and had two players sent off!

John Hills went after picking up a second yellow card on 36 minutes and Ian Cox followed, for the same reason, on 79.

"It was a disappointing afternoon," confessed Hussy. "We had enough of the play to get something from the game but we conceded a sloppy goal and then had John Hills sent off for what I thought was a particularly harsh second yellow.

"When Derby scored their second it became an uphill battle for our 10 men until Tommy Johnson scored a superb goal to put us back in with a shout.

"But once Ian Cox had gone it became mission impossible."

This result saw the club drop two places, to 18th, in the First Division table.

The following Saturday and Gillingham, accompanied by 864 intrepid fans, made the long trek north for the FA Cup fourth round tie at Burnley.

And unfortunately it was another defeat, 3-1 this time.

"At least we can draw a couple of positives from the game," concluded Hussy. "Darius Henderson scored his first goal for us and we saw an encouraging

display from 17-year-old Matty Jarvis which helped confirm our decision to offer him a pro contract.

"Our supporters were magnificent as usual. And they saw that, although we had enough possession to do something, we lacked the necessary quality."

First-half strikes by Ian Moore (header) and Robbie Blake (free-kick) gave the Clarets a 2-0 interval lead which Blake extended just before the hour mark.

But the Gills kept going and were rewarded with a consolation when goalkeeper Jensen failed to claim a cross from sub Kevin James and Henderson turned to smack the ball home.

In between these two matches and there was some success for the club in another knockout competition.

Not for the first team, but for the Under-18s. They took on and defeated Watford 1-0 in front of 1,673 fans at Priestfield in round four of the FA Youth Cup.

A tight encounter remained goalless until Luke Howell struck with a bullet header, from Ashley Dumas' corner, in the closing moments of extra time.

The young Gills were drawn to play Blackburn Rovers, away, in the fifth round.



Sky Bet are proud sponsor  
of The Football League

**£10**

**Paid to  
GILLINGHAM**

when you make your first deposit\*

**HOME OF THE  
PRICE BOOST**

We'll offer enhanced  
odds on Football  
League matches

**PLUS** choose Sky Bet as your bookmaker and we'll  
give back a share of the revenue generated to  
**GILLINGHAM**

Go to [www.skybet.com/gillingham](http://www.skybet.com/gillingham)  
to join up and earn your club money



\*New customers only. Terms and conditions apply. Gamble responsibly. For more info visit [www.gambleaware.co.uk](http://www.gambleaware.co.uk)  
For confidential advice and support call the GamCare Helpline on 0808 8020 133



## GILLINGHAM




## SWINDON TOWN

- 1 Stuart Nelson
- 2 Matt Fish
- 3 Joe Martin
- 4 Amine Linganzi
- 5 Callum Davies
- 6 Leon Legge
- 7 Chris Whelpdale
- 8 Bayo Akinfenwa
- 9 Danny Kedwell
- 10 Cody McDonald
- 11 Myles Weston
- 12 Steven Gregory
- 13 The Rainham End
- 14 Charlie Allen
- 15 Bradley Dack
- 16 Antonio German
- 18 Charlie Lee
- 19 Connor Smith
- 20 Joe Carter
- 21 George Howard
- 22 Stephen Butcher
- 23 Michael Harriman
- 24 Jack Marriott
- 25 Devante McKain
- 26 Adam Barrett
- 27 Craig Fagan
- 29 Elliott Hewitt
- 30 Josh Hare
- 31 Jake Hessenthaler
- 33 Sam Muggleton

- 1 Wes Foderingham
- 2 Nathan Thompson
- 3 Nathan Byrne
- 4 Massimo Luongo
- 5 Grant Hall
- 6 Tijane Freitas Reis
- 7 Ryan Harley
- 8 Ryan Mason
- 9 Nile Ranger
- 11 Alex Pritchard
- 12 Dany N'Guessan
- 14 Jay McEveley
- 15 Yaser Kasim
- 16 Mark Francis
- 17 Connor Waldon
- 18 Alex Ferguson
- 19 Louis Thompson
- 20 Miles Storey
- 21 Alex Smith
- 22 Darren Ward
- 23 Jack Barthram
- 24 Lee Cox
- 25 Tyrrell Belford
- 26 Aaron Oakley
- 27 Harry Agombar
- 29 Raphael Branco
- 30 Leigh Bedwell
- 33 George Barker
- 34 Mohammed Elgabas
- 35 Kayden Jackson
- 39 Ben Gladwin
- 41 Troy Archibald Henville

### MATCH OFFICIALS

Referee: Andrew Madley

Assistants: Michael George  David Rock 

Fourth Official: John Magill

[www.gillinghamfootballclub.com](http://www.gillinghamfootballclub.com)



## NEXT HERE AT PRIESTFIELD PORT VALE

Saturday 1st February 2014

Sky Bet League One - Kick-off: 3.00pm